

The Carter Center, in partnership with Emory University, is guided by a fundamental commitment to human rights and the alleviation of human suffering; it seeks to prevent and resolve conflicts, enhance freedom and democracy, and improve health.

While the program agenda may change, The Carter Center is guided by five principles:

- The Center emphasizes action and results. Based on careful research and analysis, it is prepared to take timely action on important and pressing issues.
- The Center does not duplicate the effective efforts of others.
- The Center addresses difficult problems and recognizes the possibility of failure as an acceptable risk.
- The Center is nonpartisan and acts as a neutral in dispute resolution activities.
- The Center believes that people can improve their lives when provided with the necessary skills, knowledge, and access to resources.

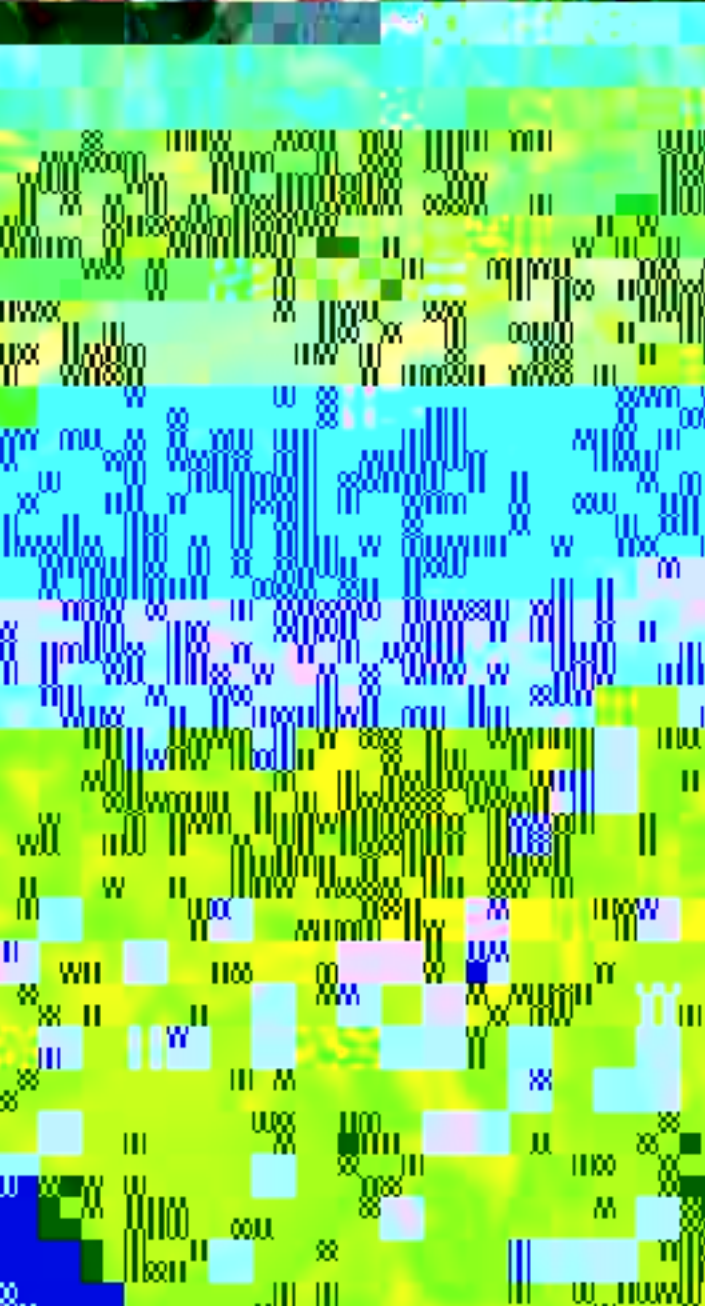
The Carter Center collaborates with other organizations, public or private, in carrying out its mission.

Our Mission

Cover photos by Antonio Fiorente, Emily Staub, and Deborah Hakes

Right: East Timorese women wait in line to vote.





Mission Statement
inside front cover

A Message from President
Jimmy Carter 2

A Letter from the Officers . . . 3

The Carter Center
at a Glance 4

Carter Center Around
the World 5

Peace Programs

Introduction 6

Elections: High Altitude
and High Stakes 8

Human Rights:
Dramatic Learning 10

Governance: Bolstering
Democracy 12

The Year in Review 14

Health Programs

Introduction 18

Malaria: Blanket
of Protection 20

River Blindness:
Healing at Home 22

A Picture of Health 27

The Year in Review

2295831465.77831.30. MC ETBT7T0 1 Tf0 0 923.5107

H20025002055C56 T261Pr544.839400.77831.30alth332

A Picture of Health .ETesS1.037m0 DoQTf0 0 919 205.3455.25 4977831.30602Eff31

The Carter Center's work to wage peace and fight disease has taken us to some of the most forgotten places around the world. Each time we are amazed by the resiliency of people in these communities. Whether facing devastating diseases or governmental corruption, people have shown that all they need is opportunity and know-how to

The Carter Center at Georgia

Overview

The Carter Center was founded in 1982 by former U.S. President Jimmy Carter and his wife, Rosalynn, in partnership with Emory University, to advance peace and health worldwide. A nongovernmental organization, the Center has helped to improve life for people in more than 70 countries by resolving conflicts; advancing democracy, human rights, and economic opportunity; preventing diseases; improving mental health care; and teaching farmers to increase crop production.

Accomplishments

The Center has observed 9 elections in 27 countries; helped farmers double or triple grain production in 15 African countries; worked to prevent and resolve civil and international conflicts worldwide; intervened to prevent unnecessary diseases in Latin America and Africa; and strived to diminish the stigma against mental illnesses.

Budget

\$77 million 2006–2007 operating budget.

Donations

The Center is a 501(c)(3) charitable organization, financed by private donations from individuals, foundations, corporations, and international development assistance agencies. Contributions by U.S. citizens and companies are tax-deductible as allowed by law.

Facilities

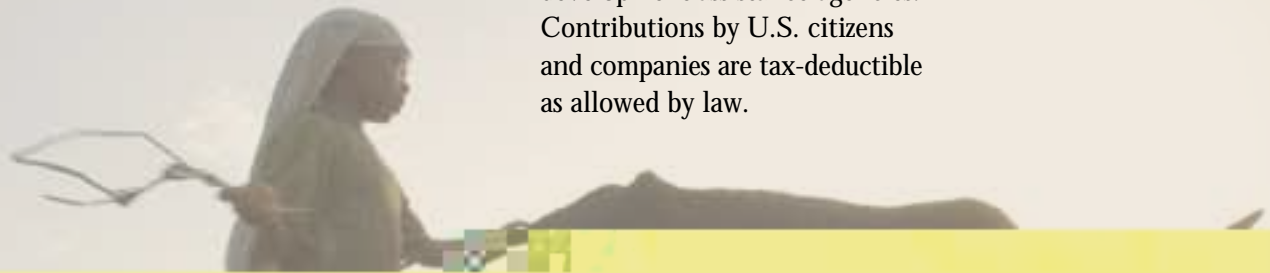
The nondenominational Cecil B. Day Chapel and other facilities are available for weddings, corporate retreats and meetings, and other special events. For information, (404) 420-5112.

Location

In a 35-acre park, about 1.5 miles east of downtown Atlanta. The Jimmy Carter Library and Museum, which adjoins the Center, is owned and operated by the National Archives and Records Administration and is open to the public. (404) 865-7101.

Staff

160 employees, based primarily in Atlanta.



North America

Canada
Mexico
United States

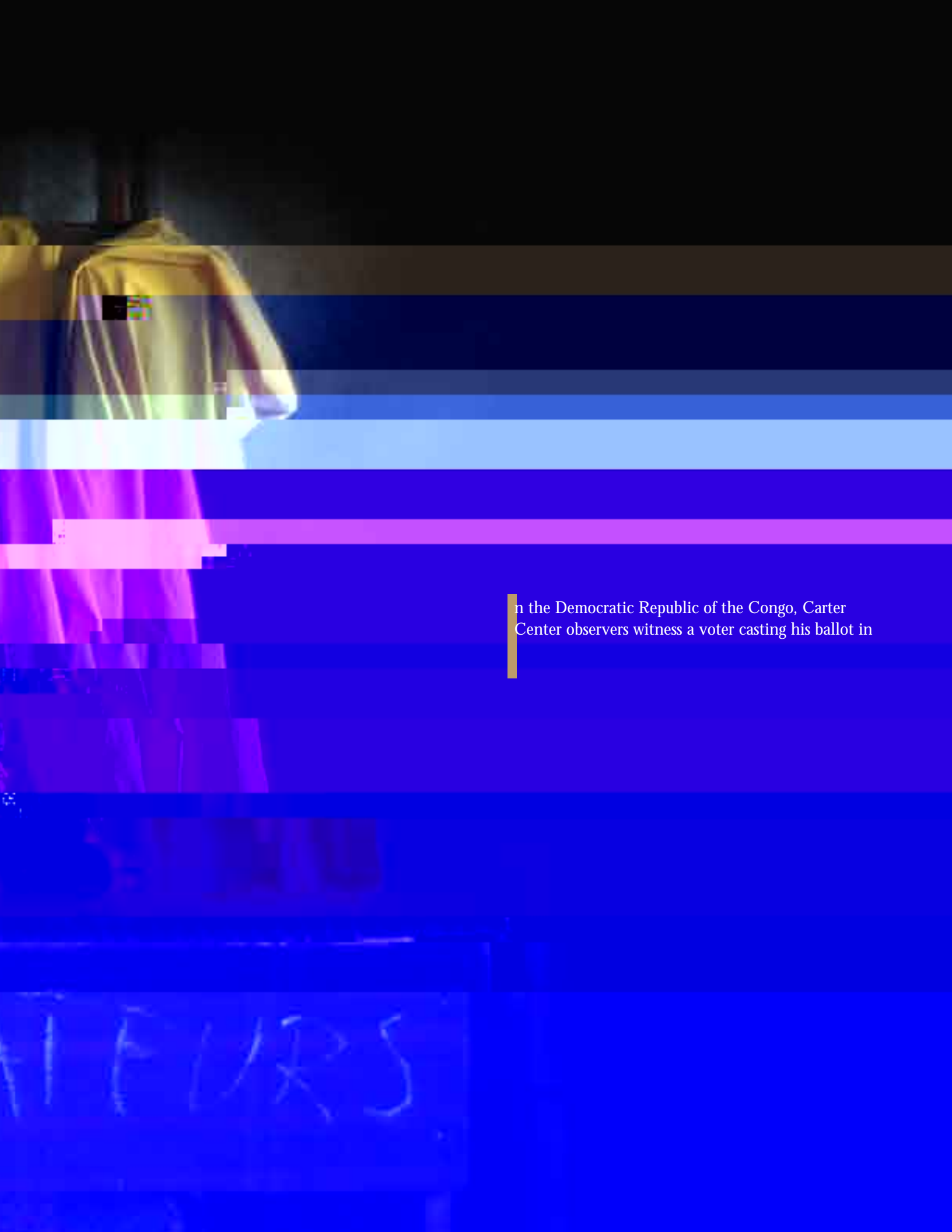
**Caribbean and
Central America**

Belize
Costa Rica
Cuba
Dominican Republic
El Salvador
Guatemala
Haiti
Jamaica
Nicaragua
Panama

South America

Argentina
Bolivia
Brazil
Chile
Colombia
Ecuador





In the Democratic Republic of the Congo, Carter Center observers witness a voter casting his ballot in

As he leaves one mountainous village, about to head to another, Jason Katz pauses to send a text message about his whereabouts to the Carter Center's field office. He could not help describing his current location in a little more detail for the office, as he just happened to be walking past the tallest mountain in the world, Mount Everest.

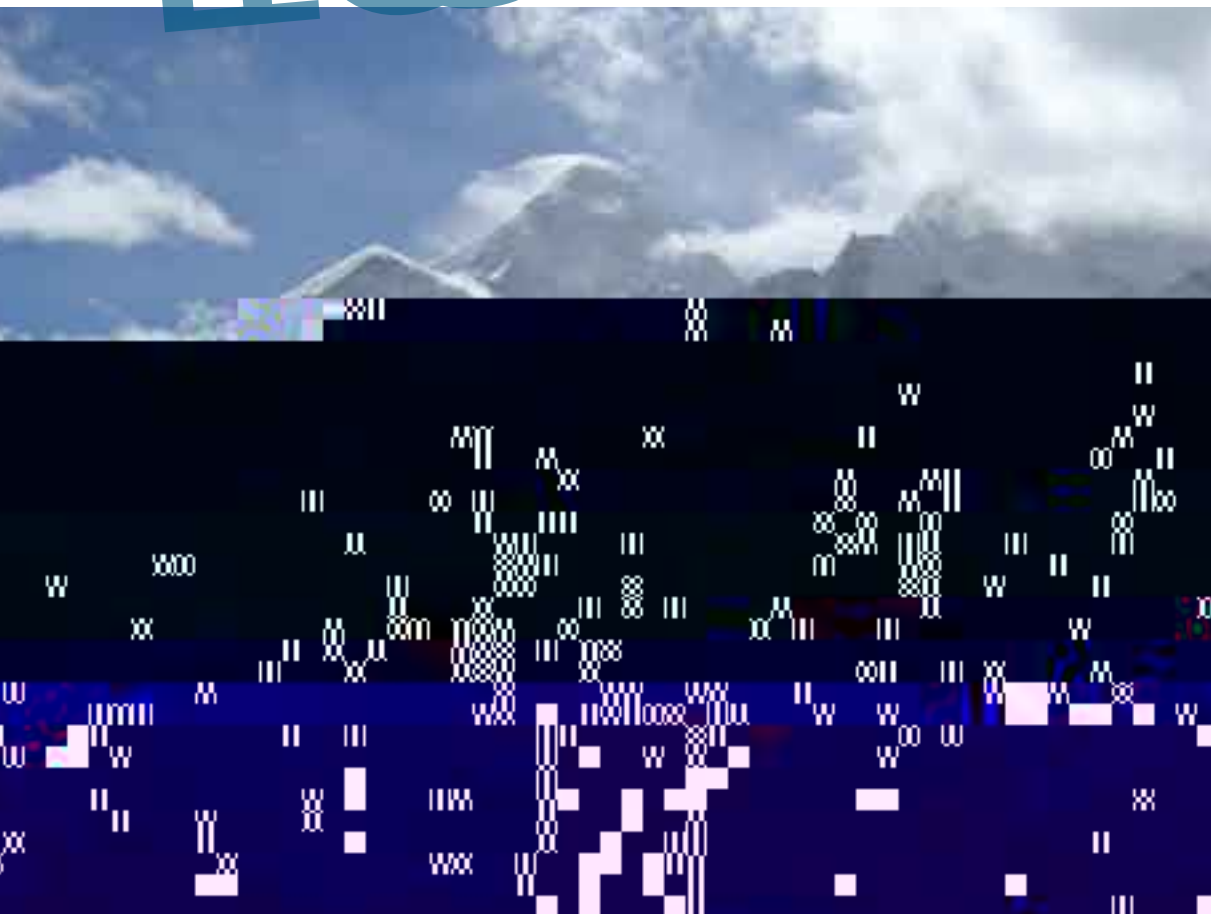
A long-term observer for The Carter Center in Nepal, Katz traveled far and wide across the country for several months to monitor electoral progress. Nepal was preparing for its first elections since parliament was restored and the king's powers curtailed in 2006.

"Due to Nepal's mountainous terrain and limited road infrastructure, most of our observation work is done on foot," said Katz. "Our aim has been to reach the country's most remote and sometimes sensitive areas in an effort to make the Carter Center's observation work as inclusive and widespread as physically possible."

For its comprehensive election observation missions, the Center deploys teams of observers to a country months in advance of an election. By evaluating the political climate and monitoring procedures leading up to election day, the Center is better able to determine whether an election is free and fair.

The Center's 13 long-term observers in Nepal traveled to all 75 districts in the

Elections



assessed voter education efforts and the fairness of campaigning activities.

Katz recalls one memorable evening when he had a three-hour dinner conversation with members of the Maoist political party at a lodge, where he learned that they were not so different from each other.

“We were both impressed with the commitment each had toward the organizations we represented,” Katz said. “But more importantly, as people, we had the ability to connect with one another and establish an environment of trust and openness regardless of our nationality, ethnic background, or political affiliation.”

Observers face unique challenges in Nepal, a country with more than 50 ethnicities and 100 languages, five climatic zones ranging from tropical to arctic, and three geographic zones, including the Terai plains and Himalayan mountains. Observers may set off by car, continue on a tiny plane, and end with a one-hour to two-day trek to reach a particular region, enduring temperature shifts from 100 F to 50 F.

The diverse group of Carter Center observers came from Bosnia and Herzegovina, Canada, Croatia, France, Germany, Sweden, United Kingdom, and the United States and brought a wealth of experience in previous election observation, conflict resolution, and political monitoring.

One of the challenges facing this group was the ongoing delay of the elections. First slated for June 2007, they were pushed to November 2007, then spring 2008. Observers must adjust to changing duties and priorities and repeat much of their work across their districts once a new election timetable is set.

Despite challenges, however, most observers find their work rewarding.

“Working for The Carter Center, I am almost always



Dramatic Learning

Acting Troupe Educates Liberians About Legal Rights

In rural Liberia, in a cinder-block schoolhouse packed with men, women, and children from nearby villages, a small group acts out a story. A woman returns home from market to find that her neighbor's daughter is uncharacteristically grumpy and rude. The woman learns that her husband has raped this young girl. She reacts by feeling shamed and asks the girl to keep the secret.

Audience volunteers come forward to act in place of both characters, handling the situation as they see fit. After several turns, the actors agree on a solution to the problem: Take the matter to the police and refuse to handle such a serious criminal matter with private negotiation.

The purpose of the drama is to inform community members about the law and their rights. The Carter Center works with five community-based organizations in southeastern Liberia that perform these dramas. After enduring 14 years of civil war, most Liberians, especially in remote areas, have little knowledge of the formal justice system, new laws, and ways to seek justice.

The dramas may seem simple, but in most villages in the country, there are no televisions, few if any books, and only sporadic radio coverage, so watching people act out a story is very entertaining for community members. The dramas spark insight and emotion as women often react with glee or tears of joy to learn they have rights under the law.

All photos: Connie Nelson



Opposite: A woman from the village of Galai, Liberia, celebrates following a dra-

Ligia Munon leans out the open window of her family's pottery factory, taking a mid-afternoon break and reflecting on the upcoming national elections. She lives

Below: In this 2000 photo, Mexican President Ernesto Zedillo greets citizens at a political rally. Zedillo, like many Latin American presidents, struggled with a deep economic crisis during his term.

Right: Even after 20 years of voting in hopes of improving their lives, many people in Latin American countries are still poor.

Opposite: A Nicaraguan woman checks for her name on a list of registered voters. Nicaragua was one of eight countries where The Carter Center studied the political finance system for flaws.



The Carter Center partnered with Transparency International for the first phase of the Crinis project, a long-term initiative aimed at promoting accountability in political financing. The ultimate goal is to increase public trust in democracy and political parties.

Peace Programs

The Carter Center believes that credible elections are essential for creating democratic legitimacy. In post-conflict countries, credible elections also can help to consolidate fragile peace accords and promote sustainable peace by opening up important new channels for popular participation. The Center's work on elections also reinforces its broad-based agenda to strengthen human rights worldwide. In the past year, the Center has organized election observation missions in Sierra Leone, Nepal, East Timor, and Venezuela.

Working to build peace in Nepal since 2003, the Center transitioned its focus from conflict resolution to election observation last spring. Constituent assembly elections were postponed until spring 2008, but the program continues to assist the process.

A Carter Center delegation observed East Timor's parliamentary elections in June 2007, which were well-executed and bore testimony to the hard work of election officials.

The Center sent a technical mission to monitor the use of electronic voting in Venezuela's December 2006 presidential election and to test a methodology to observe the emerging technology.

In Sierra Leone, the Center's election observation assistance to the African Union in August strengthened constructive relations between the two organizations.

Meanwhile, conflict following the 2005 elections in Ethiopia prompted the Center to remain engaged and support an Ethiopian initiative to organize public dialogue on issues relevant to Ethiopian society and democratic development.

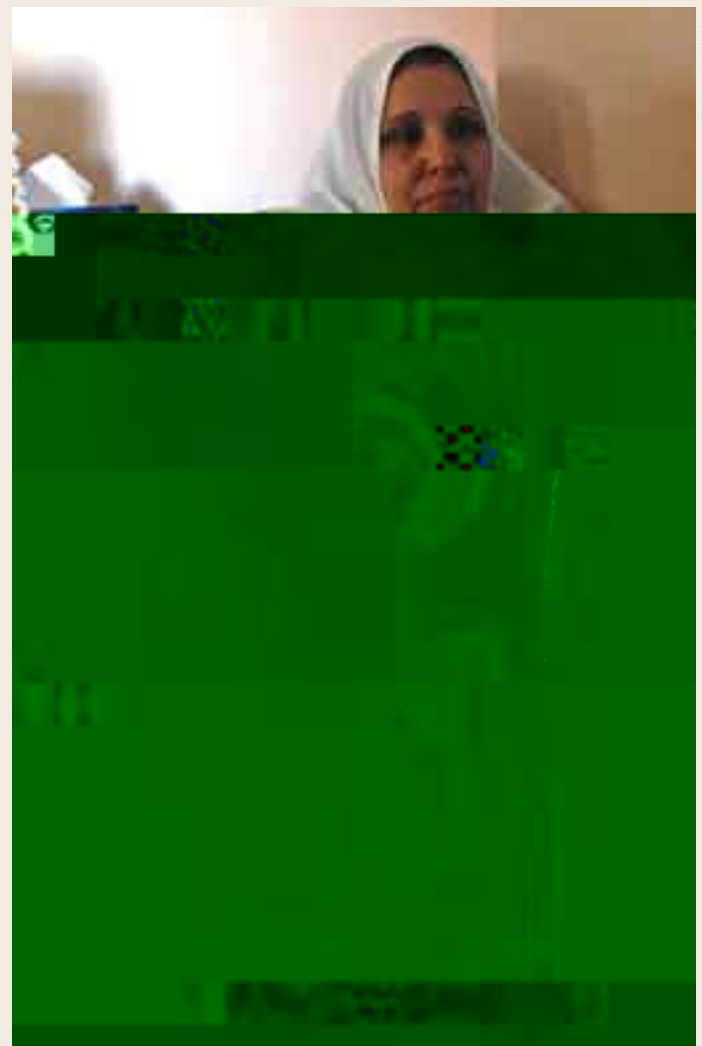
The Carter Center continued amplifying the voices of human rights defenders worldwide through its annual Human Rights Defenders Forum. In September 2007, activists for peace and freedom from 20 countries came to The

Carter Center to discuss the adversities they face and to challenge faith leaders to support their work.

In the Democratic Republic of the Congo, the Center used momentum from observing elections in 2006 to begin postelection work to strengthen human rights and democratic protections in the war-torn country. Implementation began in July for justice-sector activities, a nongovernmental organization capacity-building project, and an initiative to promote the publication and analysis of all mining contracts signed during the Congo war.

The Center opened a field office in the Palestinian territories to monitor the political situation, peace efforts, human rights issues, and electoral developments in the region. Periodic public reports will draw international attention to critical issues, and the Center will engage with local partners to promote democratic dialogue and institutions and to protect human rights.

The Carter Center continued to support the transformation of how human rights violations are addressed by



Right: A Palestinian woman discusses the death of her son, who was killed in a refugee camp. A new Carter Center field office in the Palestinian territories will monitor human rights conditions.

Opposite: Alejandro Toledo, former president of Peru, discusses the Carter Center's observation of the Nicaraguan elections with a news crew. Along with former U.S. President Jimmy Carter and former Panama President Arditto Barletta, Toledo co-led the Carter Center delegation in Nicaragua.



Deborah Hakes

the United Nations. In March 2007, the Center presented a statement to the new U.N. Human Rights Council on behalf of President Carter, encouraging the council's development and urged it to maintain the independence of investigators who analyze emerging human rights issues.

Capitalizing on the Carter Center's successful election observation in 2005, the program re-established a presence in Liberia to help consolidate peace after a devastating civil war and to help build the legal foundations for the new democracy. The Center is supporting efforts to establish conditions for a durable peace by creating a functional and responsive rural justice system that addresses local needs and gender rights.

At the invitation of the Liberia Ministry of Justice, the Center worked with five Liberian grassroots organizations to provide civic education on the role of the Ministry of Justice and the law, began to create a sustainable network of community legal support services, and supported local and national dialogue about legal reform in rural areas.

Travel in Review

In the Middle East, program staff continued to support President Carter's efforts for a just settlement to the Israeli-Palestinian conflict, and in Nepal, the Center continued to support the peace process that led to agreement on national constituent elections. Staff also conducted conflict assessments in Sudan and Ethiopia and continued to monitor unstable regions around the world to keep abreast of potential conflicts and possible Center conflict resolution engagement.

the program for kids with Transparency International on their Americas Program engaged in diverse activities this year to restore citizens' confidence in democracy. The program focused on troubled democracies in the Western Hemisphere — working with citizens in conflict,



prominent online platforms in China for political debate, information about democracy, and exchange of ideas on political reform innovation.

In collaboration with local governments and research institutions, the program has trained hundreds of local government officials and People’s Congress deputies on rule of law and representation issues across China.

The program also has begun to promote social justice for the silent but increasingly angry poor who have not benefited from economic reforms. A small urban

community empowerment project was launched in 2007 to help identify appropriate channels through which citizens can register complaints and seek justice.

The program continued its collaboration with the China University of Political Science and Law (CUPL), agreeing in May 2007 for joint activities on legislative recommendations for a social security law in China and human rights training. A Carter Center-CUPL joint research center on social development in China was established.

International Council on Conflict Resolution

- Former Undersecretary-General and Former Special Representative of Secretary-General in Angola, United Nations
- Former Prime Minister of Sweden and Special Envoy of the U.N. Secretary-General to the Balkans
- Co-founder, West African Network for Peace Building
- Professor of Coexistence and Director of the Master’s Program in Intercommunal Coexistence, Brandeis University
- Co-chairman of the Board of Directors, Center for the Study of Islam and Democracy
- Chief Executive Officer, GDP Associates, Inc.
- Special Adviser to the U.N. Secretary-General
- Director, Global Negotiation Project, Harvard University
- Professor of International Organization and Conflict Resolution, The School of Advanced International Studies, The Johns Hopkins University

Friends of the Inter-American Democratic Charter


- Former Minister of Justice and Labor of Paraguay
- Former President of Panama
- Former President, Inter-American Commission on Human Rights
- Former President of Chile
- Former Representative of the United States Congress
- Former Vice President of Colombia
- Former President of Costa Rica
- Former President of Brazil
- Former President of the United States of America
- Former Prime Minister of Canada
- Former Foreign Minister of Peru
- Former President of Ecuador
- Former President of Uruguay
- Former Minister of Foreign Affairs of Canada
- Former Minister of External Affairs of Canada
- Former Foreign Minister of Colombia
- Former President, Inter-American Court for Human Rights, Venezuela
- Former President of Colombia
- Chair of the Board of Directors of the Inter-American Institute of Human Rights
- Former Vice President of Nicaragua
- Former President of Trinidad and Tobago
- Former Prime Minister of Barbados
- Former Human Rights Ombudsman of Peru
- Former President of Mexico

Advisers

- Former Minister for the Advancement of Women and Human Development of Peru
- Principal Adviser, Special Office in Europe, Inter-American Development Bank
- Director, Americas Program Center for Strategic and International Studies

On Leave for Official Service

- Former Foreign Minister of Argentina
- Former Undersecretary of Foreign Relations for Human Rights and Democracy of Mexico
- Chair, Canadian Foundation for the Americas
- Former Director, National Office of Electoral Processes, Peru
- Former Director of Latin American and Caribbean Affairs National Security Council
- Former Executive Coordinator of the OAS Unit for Promotion of Democracy, Canada



Victims of disease often face great physical pain. Children cry when Guinea worms are extracted from their feet or legs. Women afflicted with trachoma cannot bear to open their eyes because their in-turned eyelashes scratch their corneas with every blink. Intense itching from river blindness leads people to use rocks and sticks to scratch themselves, causing permanent scarring.

Just as painful to victims are the social consequences of disease — isolation, inability to work or attend school, loss of independence, and shame to name a few.

The Carter Center's health work is easing both the physical and social suffering caused by disease. By delivering medication, filters, bed nets, along with health education, and working with government ministries of health to keep programs sustainable, The Carter Center is bringing hope to some of the world's most forgotten people. And when one life is made healthier, it is made

Blanket of Protection

Long-Lasting Nets Offer New Hope in Malaria Fight

O



All photos: Louise Gubb

Above: Dr. Estifanos Biru (left), the Carter Center's deputy country director for Ethiopia, discusses appropriate bed net use with Sahlu Wolde.

Right: Wolde signs for his allotment of bed nets using his inked finger.

Opposite: At a distribution site, program staff demonstrate how to hang bed nets correctly to protect against malaria. Hung over sleeping areas and tucked under the mattress, bed nets are made from insecticidal fabric that kills biting insects that land on it as they attempt to bite the sleeper below.



malaria. The Center helped distribute the nets to families in the Amhara; Southern Nations, Nationalities and Peoples; and Oromiya regions of Ethiopia.

The infected mosquitoes that transmit malaria bite only at night, which is why the protection provided by sleeping under an insecticidal net can be crucial in preventing the

Malaria



Healing at Home

Brighter Future Awaits Former Outcast with River Blindness

Today, a visitor to the Mbale district of eastern Uganda might see Mustafa Mugwano happily plowing his fields in the lush farming village of Bunawazi. But two years ago, he would have been found living alone in the forests bordering the village. Mugwano survived there for more than 10 years after having been turned away by his community.

In the early 1990s, Mugwano's eyesight began to weaken, and his skin developed lumps and severely itchy rashes. The unbearable itching forced Mugwano to scratch his legs with rocks and coarse sticks, cutting them open and permanently disfiguring his skin. His symptoms became increasingly worse until he could no longer concentrate on his work. Neither he nor his family knew what was ailing him, but many in the village suggested that he was bewitched. Eventually people feared Mugwano, and he was abandoned by his three wives and exiled from Bunawazi.

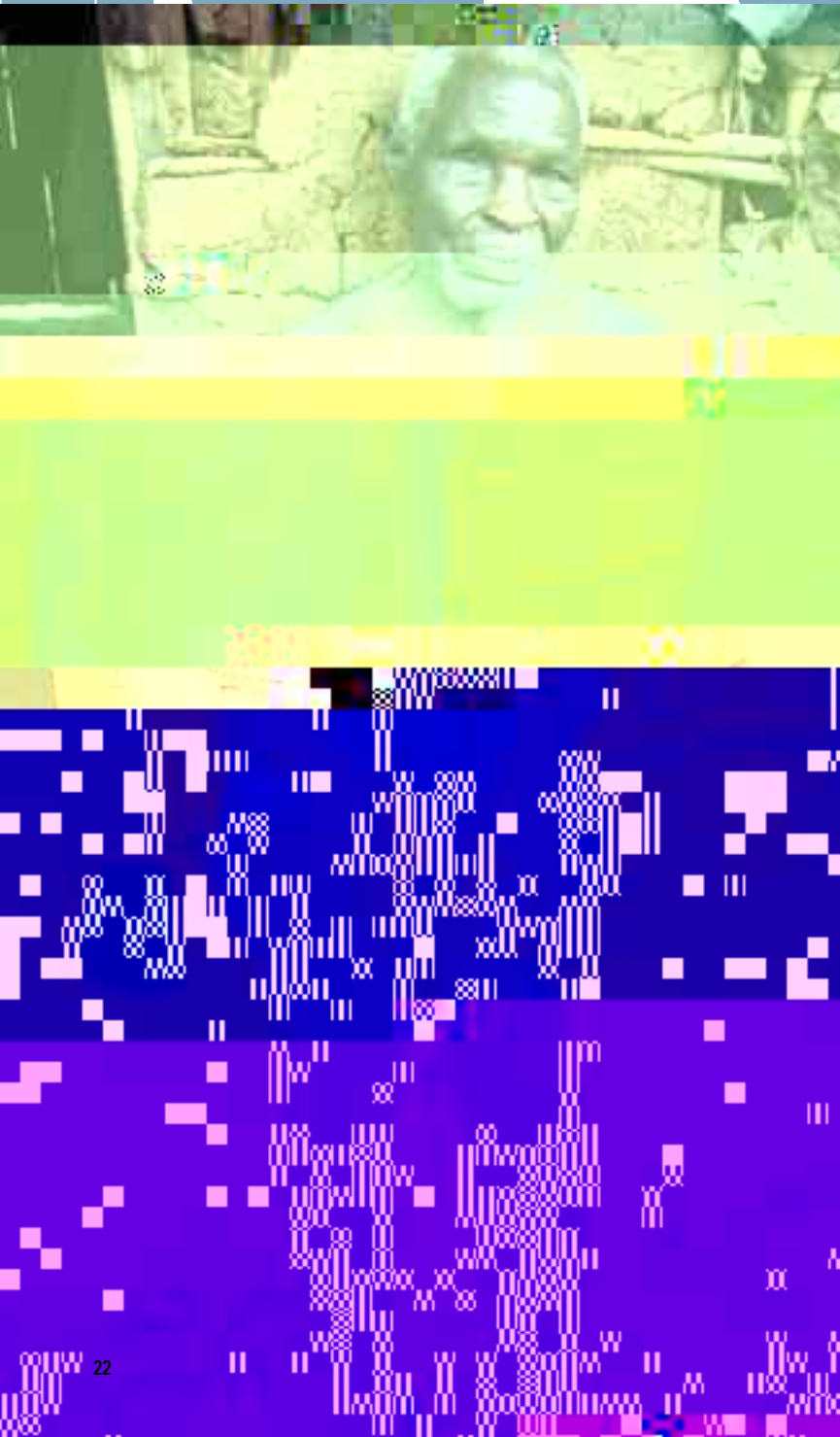
"I hated myself. I knew I was going to die and be eaten by dogs since no one wanted to be near me," he remembered.

Mugwano was suffering from river blindness (*onchocerciasis*). Spread by the bites of tiny black flies, parasitic worms enter the body, mature, and reproduce. The offspring, known as microfilariae, swarm under the skin and cause intense itching. If the microfilariae migrate to the eyes, vision can weaken, leading to blindness. An estimated 2 million Ugandans are at risk for contracting the debilitating disease. The Carter Center assists the Ugandan Ministry of Health's River Blindness Program to control the disease by educating people on its cause and symptoms and treating

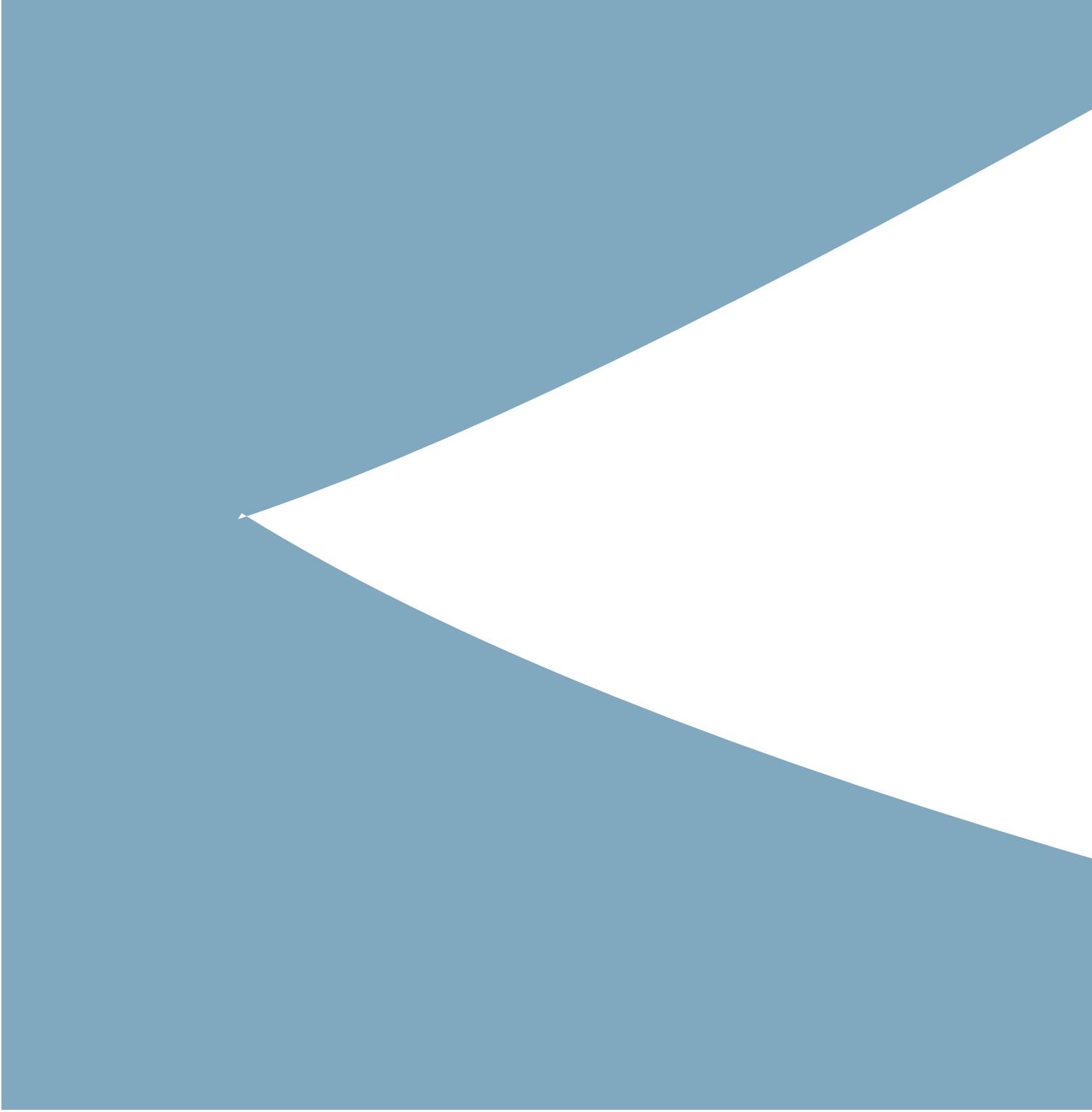
Left: Unbearable itching caused Mustafa Mugwano to permanently disfigure his legs when he scratched them with rocks and sticks. A victim of river blindness, Mugwano found himself ostracized by community members.

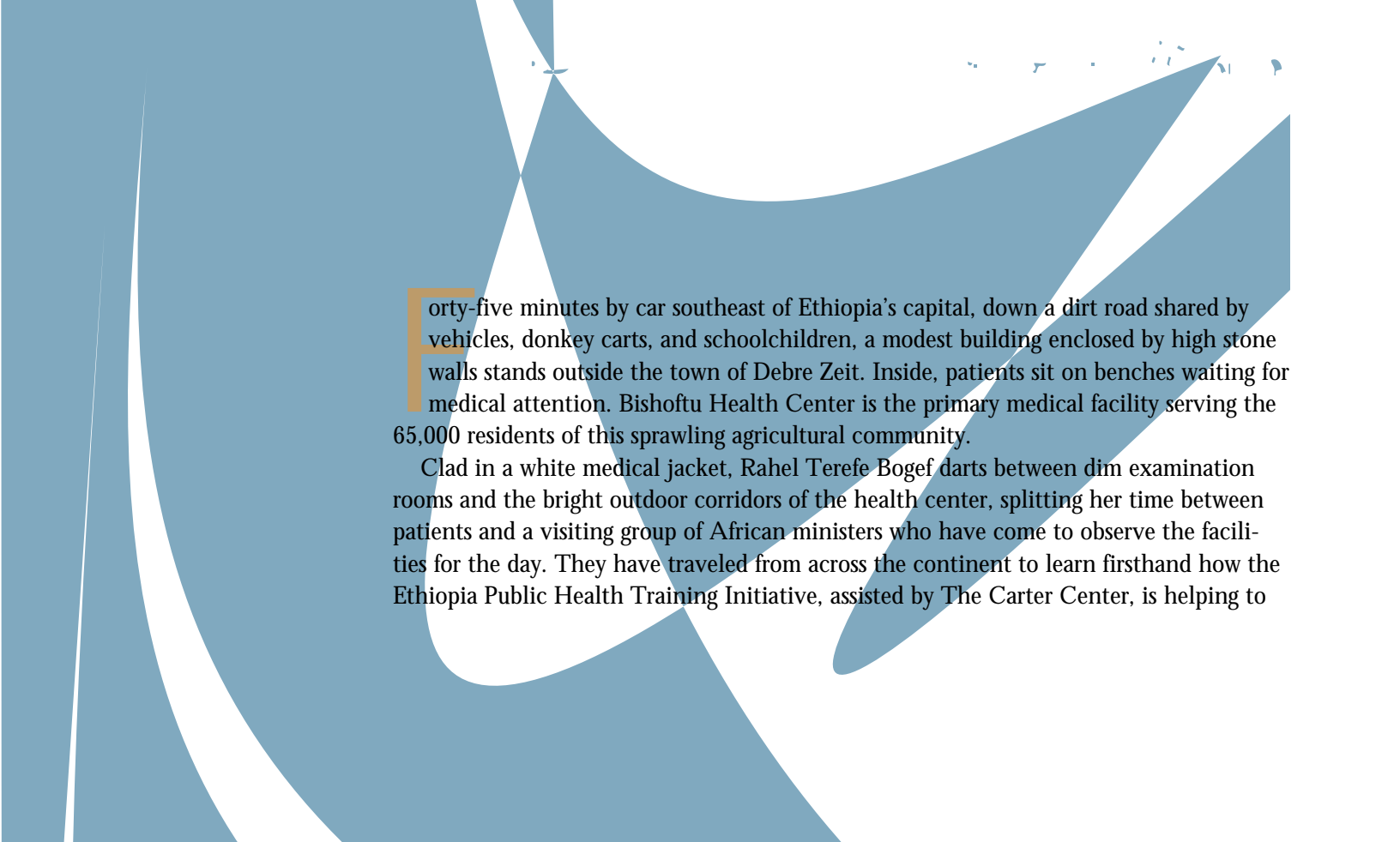
Opposite, Above: A Ugandan health worker measures a man to determine his dose of Mectizan, the medication that reverses infection and prevents river blindness.

Opposite, Below: The flies that transmit river blindness breed in fast-moving streams such as this one.



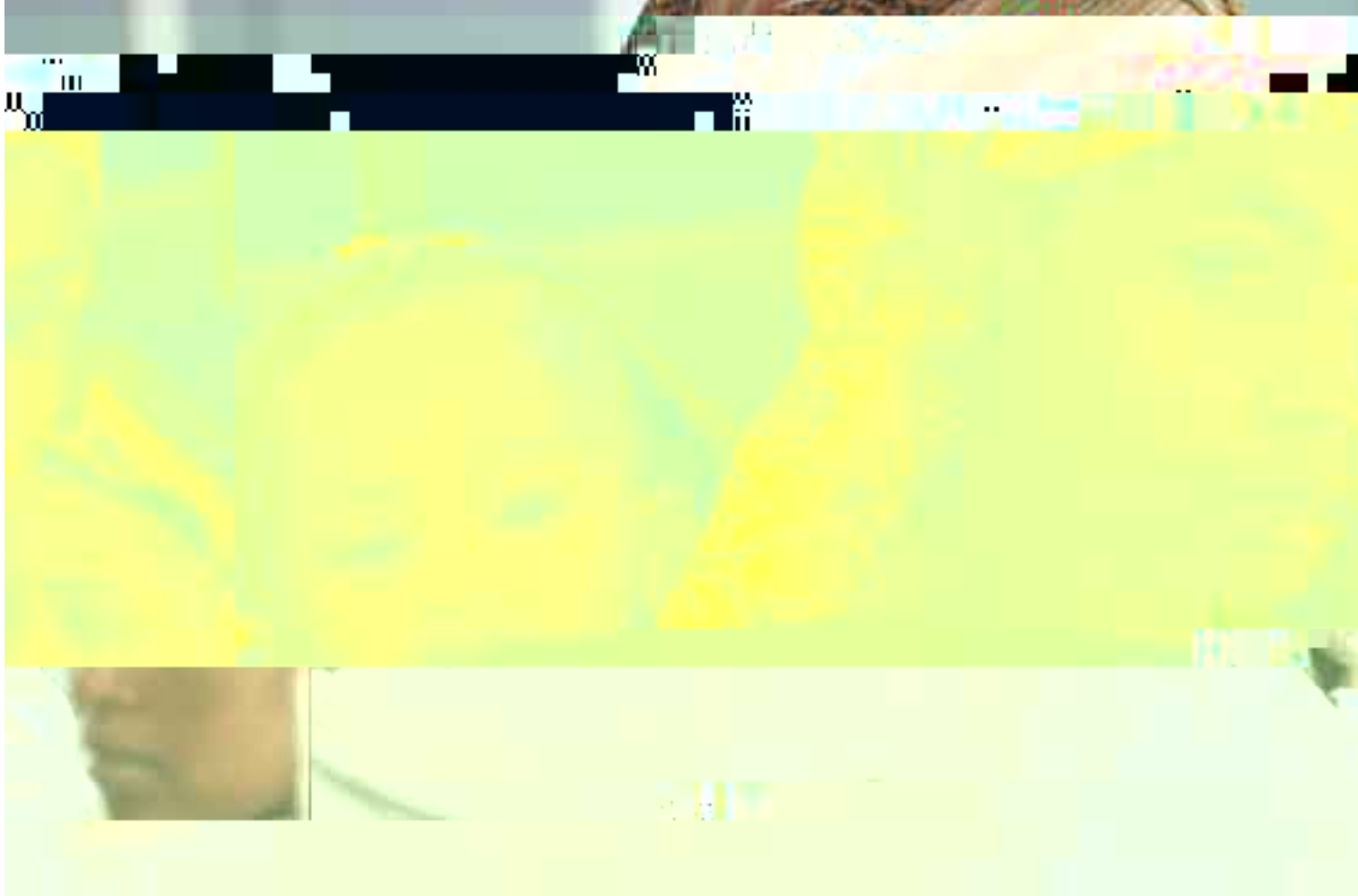
The Carter Center





Forty-five minutes by car southeast of Ethiopia's capital, down a dirt road shared by vehicles, donkey carts, and schoolchildren, a modest building enclosed by high stone walls stands outside the town of Debre Zeit. Inside, patients sit on benches waiting for medical attention. Bishoftu Health Center is the primary medical facility serving the 65,000 residents of this sprawling agricultural community.

Clad in a white medical jacket, Rahel Terefe Bogef darts between dim examination rooms and the bright outdoor corridors of the health center, splitting her time between patients and a visiting group of African ministers who have come to observe the facilities for the day. They have traveled from across the continent to learn firsthand how the Ethiopia Public Health Training Initiative, assisted by The Carter Center, is helping to



People here suffer daily from maladies such as diarrhea, malnutrition, malaria, and HIV/AIDS, yet nearly half of Ethiopians do not receive any health services. Bogef said officers like her are helping to change the face of health care delivery in rural Ethiopia: “Patients can now see health officers regularly, and many complicated cases can be managed in our health centers instead of having to transport patients to hospitals.”

For more than a decade, the Ethiopia Public Health Training Initiative, a partnership between The Carter Center, Ethiopia

Health Programs

In 2007, Guinea worm disease neared the brink of extinction thanks to The Carter Center, its partners, and the national Guinea worm eradication programs. An ancient parasitic disease transmitted only by drinking contaminated water, Guinea worm can be controlled by filtering all drinking water and educating victims to prevent further transmission.

Ethiopia, Cote D'Ivoire, Burkina Faso, and Togo successfully stopped transmission of Guinea worm disease, reporting zero cases for at least 12 consecutive months. Of the original 20 endemic countries in 1986, only five remain endemic — Ghana, Mali, Niger, Nigeria, and

Sudan. Approximately 10,000 cases were reported in 2007, compared to 25,217 cases in 2006.

Sudan and Ghana continue to shoulder most of the world's remaining cases. Three years after signing a peace agreement to end two decades of civil war, Southern Sudan, assisted by The Carter Center, has made remarkable progress building infrastructure and implementing interventions in newly accessible areas, leading to more than a 65 percent reduction in Guinea worm cases during 2007. Eradication efforts in Ghana improved significantly in 2007. Overall there was a 56 percent reduction in cases outside of one district, which reported a large outbreak of Guinea worm disease in early 2007.

Sadia Mesuna, 6, and her friend, Fatawu Yakubu, look at a children's book about Guinea worm disease. The children were two of 20 patients at a Guinea worm case containment center run by The Carter Center in Savelugu, Ghana.



Louise Gubb

Fever in Review

Today, The Carter Center and its coalition partners, in collaboration with thousands of dedicated community health workers, continue to intensify efforts to fight the last fraction of 1 percent of this debilitating disease.

In November 2006, the River Blindness Program's elimination campaign in the Americas announced the groundbreaking news that Santa Rosa, Guatemala, had become the first of 13 river blindness-affected areas in Latin America to be considered free of river blindness. Two more areas — Escuintla in Guatemala and Lopez de Micay in Colombia — followed suit in 2007, leaving only 10 areas endemic with the disease.

River blindness (*onchocerciasis*) is a parasitic disease transmitted by the bites of small black flies that breed near rapidly flowing streams and rivers. It causes severe itching, skin rashes, and eye damage, sometimes leaving sufferers completely blind. Thankfully, this disease can be prevented by the drug Mectizan,[®] donated by Merck & Co., Inc.

Due to the high prevalence of river blindness in Africa, among other obstacles, many global experts believe river blindness can only be controlled, not eliminated, on the continent. In early 2007, however, high-ranking Ugandan government officials announced the country's strategy for eliminating the health threat. In the six areas currently targeted by Uganda for elimination, the program has intensified Mectizan treatments by moving from providing annual doses to semiannual doses, an approach that has proven effective in Latin America.

In 2007, the program, which is supported by Lions Clubs International Foundation, celebrated the distribution of 100 million Mectizan treatments to 11 countries since 1996.

A bacterial eye infection that leads to blindness, trachoma plagues many countries in Africa, disproportionately affecting women and children. To prevent suffering and irreversible blindness, The Carter Center and its partners, including Lions Clubs International Foundation, promote the World Health Organization's SAFE strategy: surgery, antibiotics, facial cleanliness, and environmental improvement.

Environmental improvement, such as latrine building, not only helps keep communities free from trachoma infection but reduces the prevalence of diarrheal disease and intestinal worms, leaving people healthier. In 2007, the program supported the construction of approximately 69,000 latrines in the six countries The Carter Center assists. More than 14,000 new volunteers were trained to conduct health education in their communities.

To better use resources and increase sustainability, integrating trachoma interventions with other health services was a program focus in 2006–2007. In Amhara region, Ethiopia, the program integrated bed net distribution to prevent malaria with ongoing trachoma control and is working to show trachoma elimination is possible. In Southern Sudan, the program has integrated trachoma prevention with the Guinea worm eradication program.

Also in 2007, a comprehensive library of trachoma health education materials in many languages was made available on www.cartercenter.org.

The Carter Center-assisted Lymphatic Filariasis Elimination Program in Nigeria continued to provide hope for millions of people affected by the disfiguring disease. Transmitted by the bites of mosquitoes, the disease can cause elephantiasis — a swelling of limbs or genitalia — that can lead to severe social stigma.

With support from the Bill & Melinda Gates Foundation, The Carter Center began studying the feasibility of eliminating lymphatic filariasis with bed nets in southeastern Nigeria, a geographic area where co-infection with the parasite *Loa loa* limits drug treatment options for lymphatic filariasis. The aim of the new project will be to test whether transmission of lymphatic filariasis can be stopped without the use of drug treatment.

The program also continued to prevent and manage lymphatic filariasis in Nasarawa and Plateau states through health education and annual single-dose combinations of oral medicines — albendazole donated by GlaxoSmithKline and Mectizan[®] donated by Merck & Co., Inc. The program distributed approximately 1.7 million treatments in the two states in 2007. The

Interns Further Center's Mission

The Carter Center relies on its interns to help accomplish its goal of advancing peace and health worldwide. Each year, nearly 100 interns and graduate assistants come to the Center to contribute to the work of peace programs, health programs, and internal operations. The 2007 class of interns, most of whom spoke multiple languages, represented 20 countries from six continents.

Approximately 15 percent of the interns had the opportunity to travel to countries such as East Timor, Sudan, and China to witness the Center's work firsthand. Those remaining in Atlanta effected change around the world through research, country updates, and programmatic support as well as the chance to work alongside former U.S. President Jimmy Carter and his wife, former First Lady Rosalynn Carter.

"The internship program at The Carter Center is one of the most important aspects of the work we do because it engages young people in projects at the country level," explains Carter Center President and CEO Dr. John Hardman.

When each internship session is complete, interns and graduate assistants leave the Center better prepared for the world of work.

Fall 2007 intern Josie Caves said, "We have received an educational and professional experience that is not only impressive, but — and here please forgive me for waxing a bit sentimental — it is akin to inspirational."

Peace Programs

Vice President, Peace Programs

Fellow, Russian Law and U.S.-Russian Relations

Fellow, Commission on Radio and Television Policy

Director, Democracy Program

Director, Research; Faculty Assistant to President Carter

Director, Educational Programs

Director, China Program

Director, Americas Program

Director, Human Rights Program

Health Programs

Vice President, Health Programs

President, Sasakawa Africa Association

Director, Mental Health Program

Donors and partners from around the globe join with The Carter Center in a commitment to our peace and health projects. Individuals, foundations, corporations, multilateral organizations, and governments support our programs. These partnerships allow the Center's work to have greater impact through a shared pursuit to wage peace, fight disease, and build hope throughout the world.

Mr. and Mrs. Charles A. DeBenedittis
 Mr. and Mrs. Steven A. Denning
 Mr. Thomas M. Dethlefs
 Mr. and Mrs. Charley G. Dobson
 Estate of Lawrence A. Dollman
 Ms. Mary A. Dorn
 Dr. and Mrs. R. Philip Doss
 Douglas Foundation
 Ms. Mary Mills Dunea
 Mr. and Mrs. Gayne R. Ek
 Ben E. Factors Foundation
 Ms. Sarah Faulkner
 Ms. Taj Ferdowski
 Mr. and Mrs. Russell C. Filbeck
 Mr. and Mrs. Cameron H. Fowler
 The Fraser Family Foundation
 Mr. Robert E. Friedman and
 Ms. Kristina Kiehl
 Full Circle Living
 Mr. and Mrs. John C. Furlong
 Mr. and Mrs. David H. Gambrell
 General Electric Company
 Drs. Paul and Katherine Gerke
 Mr. and Mrs. Roger C. Gibson
 Ms. Sandra Gilbertson
 Mr. John Gill
 Mr. and Mrs. John A. Gilmartin
 Global Spectrum Inc.
 Dr. John Godersky and
 Ms. Barbara Covey
 Mr. Adam D. Goldsmith
 Mr. and Mrs. Abie M. Golshani
 Mr. and Mrs. Ken K. Gouw
 Mr. and Mrs. Robert H. Graham
 Mr. and Mrs. Carroll J. Haas Sr.
 Margaret E. Haas Fund of the
 Marin Community Foundation
 Mr. Carl Haefling and
 Ms. Pamela Johnson
 Mr. and Mrs. Bruce S. Hall
 Dr. and Mrs. William J.
 Hardman III
 Mr. Peter V. Harris
 Mr. Joseph R. Haun
 Ms. Carol Henning
 Ms. Ann D. Herbert
 Mr. and Mrs. Jack Herschend
 Mr. and Mrs. James D. Hier
 Mrs. Jean S. Holder
 Dr. Nelson D. Horseman and
 Dr. Karen A. Gregerson
 Ms. Susan Hrib
 Ms. Charlotte A. Hubley
 Mr. James F. Hughes
 Ms. Barbara Huppe
 Mr. Richard G. Hutcheson III and
 Mr. C. Robert Kincaid
 Ms. Margaret M. Hyatt
 Dr. Robert C. Jespersen
 Mr. and Mrs. Stephen D.
 Johnston
 Mr. and Mrs. Saied Karamooz
 Ms. Lisa M. Karanovich
 Mr. Philip D. Kearns
 Mr. and Mrs. Richard C. Kerns
 Mr. and Mrs. Kevin M. Kessinger
 Mrs. Arthur J. Kobacker
 Dr. and Mrs. Adel B. Korkor
 The Charles E. Kubly Foundation
 Dr. Anne P. Lanier
 Mr. and Mrs. Bill Ledbetter
 Estate of Muriel L. Lee
 Mr. and Mrs. Robert N. Lemaire
 A.G. Leventis Foundation
 Ms. Elizabeth A. Liebman
 Mr. and Mrs. Michael B. Liman
 Mr. and Mrs. Kurt Limbach
 Mr. and Mrs. Peter Lion
 Ms. Diane M. Loucks
 The Lumpkin Family Foundation
 Mr. William P. Mako
 Mr. Duane R. Manning
 Mrs. William L. Masterton
 Mr. and Mrs. Marc Mayer
 Ms. Melani J. McCullough
 McKinsey & Company
 Mr. Brian McMaster
 Mr. and Mrs. Steven W.
 McMillen
 Mid-Continent University
 Dr. Charles L. Miller
 Mr. Stuart Mills and
 Mrs. Helen Probst Mills
 Mr. and Mrs. George P. Mitchell
 Mr. Steve Mohler
 Mrs. Kenneth F. Montgomery
 Mr. and Mrs. David G. Moriarty
 Ms. M. Eleanor Murphy
 Dr. V. S. Naiken
 Dr. and Mrs. Will L. Nash
 Mr. Kent C. Nelson and
 Ms. Ann Starr
 Mr. Steven E. Nothern
 The Osprey Foundation of
 Maryland
 Mr. and Mrs. John F. Overbeck
 Mr. and Mrs. Richard C. Overly
 Mr. Lawrence E. Page
 Parton Realty
 Dr. and Mrs. Theodore Petroulas
 Mr. and Mrs. David P. G. Phillips
 Mr. and Mrs. Mark A. Phillips
 The Pitrof Fund of The Chicago
 Community Foundation
 Mr. Scott Ranney
 Mr. Kurt N. Rathjen
 Mr. Sung Rhee and
 Ms. Stephanie Baker
 Ms. Lynette J. Rhodes
 Ms. Muriel E. Riano
 Mr. and Mrs. Carl Rigney
 Mr. and Mrs. Bruce N. Ritter
 Mr. and Mrs. James O. Robbins
 The Jack & Hilda Robbins Fund
 Mr. Roy O. Rodwell
 Mr. Lawrence D. Roesler
 Mr. and Mrs. Robert M. Rogers
 Dr. and Mrs. Fritz M. Rottman
 Dr. and Mrs. Ronald R. Rudolph
 Mr. and Mrs. Conway
 Rulon-Miller
 Ms. Andrea C. Rutherford and
 Mr. David McClintick
 Mr. Daniel J. Sandin and
 Ms. Mary L. Rasmussen
 Mr. and Mrs. Floyd C. Sanger Jr.
 Dame Marjorie M. Scardino
 Mr. Jeffrey A. Schneider
 Mr. and Mrs. Harold Schofield
 Mr. Gary S. Selken
 Sentinel Copy
 Mr. Richard L. Shewell Jr.
 Ms. Kathleen A. Shiel
 Asim Siddique
 Mr. Lawrence E. Silvertown
 Mr. and Mrs. Morris Slingluff
 Mr. and Mrs. Samuel B. Smart III
 Mr. and Mrs. Walter J.
 Smiechewicz
 Mr. David D. Smith
 Mr. Laven Sowell
 Mrs. Wendell E. Spears
 Mr. and Mrs. Philip M.
 Steinmeyer
 Mr. Edward Stern and
 Ms. Claudia Hearn
 Ms. Rebekah Stewart
 Estate of Margaretan Alice Stolfo
 Mr. Mike P. Sturdivant Sr.
 Ms. Julia Suddath-Ranne and
 Mr. Michael Ranne
 Mr. Chade-Meng Tan
 Mr. Jeffrey G. Tarrant
 Mr. Edward Tarte
 Mr. Greg Teeters
 Messrs. Andrew Tobias and
 Charles Nolan Fund of
 Stonewall Community
 Foundation
 Mr. and Mrs. Jon Tobiessen
 Mr. and Mrs. Michael J. Tuinstra
 United States Secret Service
 The UPS Foundation
 Joseph Bishop Van Sciver Fund
 Mr. David R. Virden
 Mr. Paul Von Kuster
 Mr. Dougin Walker and
 Ms. Elizabeth Bromley
 Mr. Jeffrey C. Ward and
 Ms. Dorothy J. Moore
 Estate of Jane B. Washington
 Ms. Marsha Wayne
 Mr. and Mrs. Eric Weinmann
 Mr. Jeffrey Weiser
 Dr. and Mrs. John D. Welch
 Ms. Susan M. Wester
 Ms. Regina A. Whelan
 Whirlpool Corporation
 Ms. Mildred Wichman
 Mr. Thomas Wielenga
 Ms. Gabriele Wohlaue
 Mr. Richard F. Yonash
 Mr. and Mrs. Timothy D. Zeak

\$5,000 to \$9,999
 Anonymous (2)
 Mr. and Mrs. Curtis Adams
 Mr. John B. Adams
 Mar-Jac Poultry
 Ms. Priscilla Alexander
 Estate of Howard L. Allison
 Mr. and Mrs. Richard P.
 Ambrosini
 The Next Generation Fund of the
 Hugh J. Andersen Foundation
 Ms. June P. Anderson
 Sherman Michael Anderson Trust
 Mr. and Mrs. Gerald Androne
 Ms. Katherine J. Armstrong
 Mr. and Mrs. W. F. Askins
 Mr. and Mrs. Mike Aycock
 Sirdar Aly Aziz
 Mr. and Mrs. Jack L. Bacon
 Ms. Elizabeth S. Bakewell
 Ken and Ginger Baldwin
 Bank of America
 Mr. and Mrs. Thomas
 A. Barrow III
 Mr. William C. Bartholomay
 Mr. and Mrs. Bruce L. Bayuk
 Estate of Dorothy Bender
 Ms. Susan Bennett
 Mr. and Mrs. Brad R. Benton
 Dr. and Mrs. David F. Bishop
 Ms. Colleen Boll
 Mr. and Mrs. Juan Bonilla
 Young Boozer Family Foundation
 Mr. and Mrs. Kent R. Bourquin
 Mr. and Mrs. Stephen Boyle
 Mr. Charles Kent Brodie
 Dr. and Mrs. Harold Brown
 Mr. Robert C. Bruce
 Mr. and Mrs. Art Bryant
 Mr. Robert J. Buttel
 Mr. and Mrs. Gerald Carlisle
 Mr. James R. Carr
 Mr. and Mrs. John B. Carroll
 Mrs. Sylvia Cart
 Ms. Joyce Carta
 Mr. Daniel Casey and
 Ms. Dolores Connolly
 Mr. and Mrs. Jeffrey A. Cassens
 Mr. and Mrs. John Cassidy
 Mr. and Mrs. Jeffrey Chen
 Dr. and Mrs. Paul M. Christensen
 Mr. Peter E. Clark Jr.
 Mr. and Mrs. Walter L.
 Cleaver Jr.
 Dr. Gail L. Clifford
 Mr. and Mrs. Thomas G. Cline
 Club Med Sales
 Mr. Derek Cole
 Mr. and Mrs. Joseph A. Coleman

Dr. and Mrs. J. Richard Collins
Continental Airlines
Mr. and Mrs. John H. Costello III
Mr. and Mrs. Charles Couric
Mr. Irl Cramer
Mrs. Jay Crawford
Mr. and Mrs. Paul J. Cucurullo
Mr. and Mrs. Michael D. Culver
Mr. and Mrs. Edward Cutler
Mr. and Mrs. W. Bowman Cutter
The Honorable and
Mrs. John H. Dalton
The Dart Bank
Ms. Tracey L. Davis
Mr. David B. Dillard
Mr. Gurdev S. Dindral
Mr. and Mrs. Pete Docter
Mr. and Mrs. Robert J. Dorwart
Mr. Charles M. Doyle and
Ms. Jocelyn A. Holash
Mr. and Mrs. Charles W.
Duncan Jr.
Mr. and Mrs. William J.
Durako Jr.
Mr. Eugene Eidenberg and
Ms. Anna Chavez
Mr. Gregory N. Eppler
John and Virginia Erickson
Mr. Michael G. Feinstein and
Ms. Denise Waldron
Mr. and Mrs. Christian Felipe
Ms. Laura M. Ferenc
Dr. and Mrs. Ricardo A.
Fernandez
Mr. Charles D. Ferris
Firedoll Foundation
Mr. Robert Frankland and
Ms. Helen Owens
Ms. Alice Franklin
The Fraser Family Foundation

Dr. and Mrs. Cary Yeh
Mr. Robert A. Yellowlees
Mr. and Mrs. Erwin Zaban

\$2,500 to \$4,999

Anonymous (4)
Ms. Elinor Aderton
Mr. and Mrs. Shawn M. Aebi
Albrecht Foundation
Ms. Susan W. Almy
Ms. Eleanor Alston
American Express Business Travel
Ms. Sarah J. Andersen
The Honorable and
Mrs. Brady Anderson
Mr. and Mrs. Philip A. Anderson
Arader Galleries
Mr. Brian Arbogast and
Ms. Valerie Tarico
Mr. Jeffrey S. Arnold and
Ms. Ellen J. Neely
Dr. and Mrs. Emerson M. Babb
Mr. and Mrs. Marvin L. Bailey
Mr. and Mrs. Gordon H. Bald
Mr. Leo T. Barber Jr.
Ms. Caryl Conry Beal
Ms. Mary Beck
Mr. and Mrs. Louis Bellardo
Ms. Melinda Bieber
Mr. Alan Binnie
Mr. John W. Bloom
Ms. Camille Blott
Mr. Franz-Josef Boll
Ms. Paula Bonhomme
Mr. Allan A. Bonney
Mr. and Mrs. Thomas H.
Boone Jr.
Dr. Philip S. Borden
Mr. and Mrs. William D. Bowers
Mr. and Mrs. Albert Boysen
Mr. and Mrs. John F. Bradley
Bridgemill Foundation
Ms. Katherine K. Brobeck
The Brodsky Family Foundation
Mr. and Mrs. Thomas M. Brody
Mr. and Mrs. Larry J. Brown
Mr. Willard B. Brown
Mr. Thomas Bundrick and
Ms. Kay Rothman
Mr. John Burgess
Ms. Mary Stewart Burgher
Dr. and Mrs. Ronald E.
Burneister
Ms. LuVella C. Burnett
Ms. Mary Ellen Byrd
Calistoga Ranch
Mr. and Mrs. Cameron
Carrington
Dr. and Mrs. John B. Carter
Mr. Kevin J. Cashman
Ms. Sally H. Chai
The Challenger Foundation
Mr. Dana Chasin
Mr. Mark Chee

Robert and Bobbe'
Christopherson
Mr. David R. Clark
Mr. and Mrs. Terry M. Clark
Ms. Marge Coahran
Mr. and Mrs. James R. Cochran
Ms. Gwyneth Colburn
Mr. and Mrs. Charles W. Cole III
Mr. and Mrs. Jerry D. Conn
Conproco Corporation
Mr. Ben I. Cooper
Mr. and Mrs. Will Corbin
Ms. Jacqueline C. Cox
Mrs. Margaret S. Crawford
Ms. Ruby Crawford
Rev. Tammie E. Crews
Mrs. Marie Cristol
Mr. Frank Critz
Ms. Judy M. Culbreath
Mrs. Helen S. Curry
Mr. Peter Danbury
Mr. Nathan Daughety
Mr. Roger Davidson
Mr. and Mrs. Julyan H. Davis
Mr. Kenneth Deken
Mr. and Mrs. Geoffrey E. J.
Dennis
Natalie DiNicola Ph.D.
Mr. David K. Donald
Dove Givings Foundation II
Ms. Betsy Downey
Ms. Cynthia G. Downman
Mr. Thomas R. Doyle
Mr. and Mrs. Stanley F. Drezek Jr.
Ms. Catherine W. Dukehart
Mr. Henry N. Easley
Ms. Diane Eberlein
Ms. Sondra Eddings
Mr. and Mrs. Burt Eder
Edwards
Mr. and Mrs. Richard C. Edwards
Mr. and Mrs. Robert Emery
Mr. Don Endres and
Ms. Jill LaPlante
Experimur LLC
Mr. Thomas V. Fehsenfeld
Mr. and Mrs. James W. Felt
Dr. R. Fenton-May
Ms. Jenna Field
The Samuel Finkel Foundation
Mr. and Mrs. John J. Finn
Ms. Adela Frame
Ms. Mary Ann Francis
Jim and Janice Frank
Ms. Linda C. Frank
A. J. Frank Family Foundation
Mr. and Mrs. Andrew D. Franklin
Mr. Matthew S. Frazier
Ms. Sheril Freedman
Mr. William L. Frye
Mr. and Mrs. James E. Furr III
G.D.S. Legacy Foundation

Ms. Stephanie Garber and
Mr. David M. Collins
Mr. and Mrs. Colin Gardner
Mr. Ben J. Gessler
Dr. Pat Ingle Gillis
Mr. Paul M. Ginsburg
Ms. Margaret B. Gloster
Google
Ms. Barbara Grant and
Ms. Maureen MacCarthy
Mr. Douglas Green
Ms. Linda H. Greene
Mr. and Mrs. Woodfin Gregg
Dr. and Mrs. Martin C. Gregory
Dr. E. Rawson Griffin III and
Ms. D. Clark Griffin-Eddings
Mr. Fred Grob and
Ms. Dorothy Kinney
Dr. and Mrs. James L. Groskreutz
Mr. and Mrs. Edward Grzedzinski
Gualala Fund
Mr. and Mrs. John Haase
Mr. and Mrs. Eric H. Habegger
Mr. Robert S. Hagge Jr.
Mr. and Mrs. John Hall
Ms. Marcia Halpern
Harvard Club of Boston
Mr. and Mrs. Jeffery N. Hayden
Mr. Robert M. Heath
Mr. and Mrs. James J.
Heckenbach
Mr. and Mrs. Jeffrey A. Heimbeck
Mr. David R. Heinz and Mrs. Meg
O'Kelley-Heinz
Mr. and Mrs. Kim Henry
Mr. Joseph E. Herbst
Mr. Daniel J. Hewitt
Hewlett-Packard Company
Mrs. Juliane Heyman
Mr. Robert M. Hildorf
Dr. and Mrs. David W. Hill
Mr. and Mrs. James L. Hilton
Mr. and Mrs. Wayne E.
Hochstetler
Ms. Joanne Hoemberg
Mr. and Mrs. Philip Holladay
Dr. Janet Horenstein
Mr. and Mrs. Paul Hruska
Ms. Heather Hull
Mr. Farley A. Hunter
Mr. John D. Hunter
Ms. Jacqueline Ikeda
Ms. Deborah J. Jackson
Jana Foundation
Mr. Robert L. Jennings and
Ms. Barbara H. Bott
Mr. and Mrs. Alan H. Jobe
Mr. and Mrs. Bruce Johnsen
Ms. Betty W. Johnson
Ms. Linda O. Johnson
Ms. Phyllis Cady Johnson
Mr. and Mrs. Scott K. Johnson
Dr. and Mrs. Thomas D. Johnson

The Robert Wood Johnson
Foundation
Mr. Charles E. Jones
Ms. Kris L. Kandler and
Ms. Kim Kandler
Mr. Azim Kassam
Mr. John Hodge and
Ms. Stacey Keare
Mr. and Mrs. Robert B. Kellogg
Mr. and Mrs. Derek G. Kirkland
Mr. and Mrs. Bruce Kirschenbaum
Mr. and Mrs. S. Lee Kling
Mr. Jay Kloosterboer and
Ms. Barbara Zicari
Mr. and Mrs. Jonathan B. Kluger
Mr. and Mrs. Wyck Knox
Mr. Koji Kobayashi
Mr. and Mrs. Peter Kondor
Mr. John Henry Kreidler and
Ms. Patsy Meyer
Krispy Kreme Doughnut
Corporation
Ms. Celia A. Kudro and Ms.
Rhonda J. Parish
Mr. and Mrs. Lawrence N.
Kugelman
Mrs. Julia Ladner
Mr. and Mrs. Peter Lamm
Mr. and Mrs. David L. Lammert
Ms. Wilma M. Langhamer
Dr. James T. Langland and
Dr. Penny I. Langland
Ms. Helen Latherow
Mr. and Mrs. Rejean Laverdiere
Mr. Michael Lebowitz
Le Fort-Martin Fund of
The Chicago Community
Foundation
Mr. David O. Leiwant
Léron
Ms. Mary Lindsey Lewis
Ms. Sue Lewis
Mr. Bruce Lincoln
Ms. Nora L. Lindsey
Ms. Sara D. Lipscomb
Mr. Lawrence P. Littlewood and
Dr. Edna M. Littlewood
Mr. Christopher J. Ludewig
Mr. Dan W. Lufkin
The John D. and Catherine T.
MacArthur Foundation
Mr. Christopher M. Mackey and
Ms. Donna L. Cherniak
Dr. Thane Michael Mains
Mr. Donald Mansfield and
Ms. Rochelle Johnson
Mansour
Mr. and Mrs. James F.
Marchman III
Mr. David R. Mares and
Ms. Jane Milner Mares
Mr. Colin A. Marshall and
Ms. Maureen A. Ulicny
Mr. John Martin
Mr. and Mrs. Lowell B. Mason Jr.

Donors During 2006–2007

- Mr. and Mrs. Mark A. Massengill
 Mr. Peter E. Matushek
 Mr. and Mrs. Paul Maxwell
 Mr. Brian K. Mazar and
 Mrs. Anne S. Mazar
 Mr. James A. McBride and
 Ms. Mary Morse
 Mr. Edward A. McCallum
 Mr. Thomas J. McCarthy
 Mr. and Mrs. Ben G. McDow
 Dr. Mary Jo McGee-Brown
 Mr. and Mrs. Jeffrey J. McHenry
 Mr. Wade F. McKenzie
 Mr. and Mrs. Hugh J. McLellan
 The McMahon Family Fund
 Mr. James McQueeny
 Eddy T. Melaragno
 Microsoft Corporation
 Ms. Julie Millane
 Ms. Celeste J. Miller
 Mr. and Mrs. James H. Miller
 Mr. and Mrs. Richard Miller
 Mr. Robert M. Miller
 Ms. Laura L. Mitchell
 Mr. Wallace D. Mohammed
 The Honorable and Mrs.
 Walter F. Mondale
 Mr. and Mrs. Richard L. Moody
 Ms. Sheila R. Morris and
 Ms. Teresa L. Williams
 The Honorable Ambler H.
 Moss Jr.
 Mount Pleasant Lutheran Church
 Mr. Richard G. Munden
 Ms. Susie Nagel
 Mr. Jose Narezo
 Mr. and Mrs. Stephen C. Neff
 New World Library
 Mr. Kevin W. Nordby
 Mr. and Mrs. Lowell Northrop
 Mr. and Mrs. Leon Novak
 Estate of Walter T. Nyberg
 Mr. James D. O'Connor
 Mr. Ronald Ortscheid
 Mrs. Nancy Packard
 Mrs. Dorothy B. Padgett
 Mr. William C. Paley
 Paris to Province
 Mr. and Mrs. Christopher D.
 Patton
 Mr. and Mrs. Corey Pavitt
 Mr. and Mrs. William Peabody
 Dr. Deborah S. Lee and
 Mr. John W. Peifer
 Mr. John W. Perloff
 Mr. and Mrs. Guy D. Pfeiffer
 PGA Tour
 Ms. Genevieve Purugganan
 Mr. and Mrs. David M. Race
 Ms. Sita Rao
 Mr. and Mrs. William T.
 Ratliff III
 Red Truck Inc.
- Mr. Michael Reich
 Dr. and Mrs. Thomas Reppun
 Ms. Laura M. Rice
 Ms. Reta Peoples Richardson
 Mr. and Mrs. Richard K. Riess
 Mr. and Mrs. Claude D. Roberts
 Ms. Nancy B. Robinson
 Mr. and Mrs. Thomas S. Roeder
 Dr. and Mrs. Edward H. Romond
 Mr. Rod Roquemore
 John Rosselli International
 Mr. James S. Rowe
 Mr. and Mrs. Brian D. Rye
 Mr. and Mrs. Eric Sahn
 Mr. and Mrs. Fred Saltvold
 Mrs. Deen Day Sanders
 Mrs. Peter A. Santucci
 Mr. and Mrs. Michael R. Saunders
 Dr. and Mrs. Lanny D. Schmidt
 Schreiber Family Fund
 The John and Kathleen Schreiber
 Foundation
 Ms. Christine Lisa Shultz
 Mr. and Mrs. Peter G. Schultz
 Mr. and Mrs. William
 Schumacher
 Dr. Robert J. Seely
 Ms. Susan Shane
 Mildred H. Shashaty Charitable
 Lead Annuity Trust
 Mr. and Mrs. Mark Shavlik
 Mr. Marcus A. Shaw
 Sheffield Harrold Charitable
 Trust
 Ms. Jane E. Shivers and
 Mr. William M. Sharp Sr.
 Ms. Ruth Shults and
 Mr. Charles Bradley
 Mr. Scott L. Siegal
 Mr. and Mrs. George Siegrist
 Mr. and Mrs. William Silver
 Mrs. Adele Simmons
 The Simmons Family Foundation
 Mr. and Mrs. Raymond Simon
 Mr. A. Boyd Simpson and
 Ms. Melody Mann-Simpson
 Ms. Lela Walton Simpson
 Ms. Alicia W. Smith
 Mr. Branden Smith
 Ms. Catherine Smith
 Dr. and Mrs. Edward Smith
 Ms. Kathryn Smith
 Ms. Margaret C. Smith
 Dr. and Mrs. R. Bob Smith III
 Mr. David J. Snider
 Ms. Lola Sorrells
 Mr. and Mrs. Ronald C. Souza
 Ms. Viola M. Spalding
 Spellissy Foundation
 Mr. Joseph A. Sports
 Mr. Thomas O. Stanley
 Ms. Elizabeth Steele
 Ms. Cindy Stevens
 Mr. and Mrs. Gordon C. Stewart
- Mr. and Mrs. David D. Stock
 Mr. and Mrs. John Stolzenberg
 Mr. and Mrs. Robert W. Stone
 Mr. and Mrs. Wally Stover
 Mr. Andrew F. Strauss
 Mr. and Mrs. Gary G. Taylor
 Mr. and Mrs. Lawrence S. Taylor
 Ms. Barbara Teichert
 Ms. Paula Terry
 Mr. Michael J. Thompson
 Dr. and Mrs. David U'Prichard
 Mr. and Mrs. R. Allen Urban
 Mr. Steve Vallarino-Sugg
 Mary and Lowell Van DeRiet
 Family Fund of the Minneapolis
 Foundation
 Mr. and Mrs. J. Edward Varallo
 Mr. and Mrs. Meeks B. Vaughn Jr.
 Mr. and Mrs. Edgar Villchur
 Ms. Dawn Vincent
 The Honorable Paul A. Volcker
 Ms. Lois P. Vrhel
 Ms. Toni Wall
 Mr. Jerry F. Walsh
 Mr. and Mrs. Robert P.
 Warmington
 Ms. Rebecca W. Watkin
 Mr. Chris Wedge and
 Ms. Jeanne Markel
 Ms. Dorle E. Weil
 Mr. and Mrs. Linden H. Welch
 Ms. Katherine L. Wells
 Ms. Dorothy G. Whitmore
 Mr. and Mrs. Paul K. Wichman
 Mr. Tim Williams
 Ms. Peggy A. Wilson
 Mr. Gregory L. Witte
 Dr. Richard V. Wolfenden
 Mr. and Mrs. Richard Wolszon
 Mr. and Mrs. James R. Woodbury
 Ms. Doris G. Woods
 Ms. Marie Elise Young
- \$1,000 to 2,499**
 Anonymous (63)
 Mr. Dwight L. Aarons
 Mr. Warren Abbey
 Mr. and Mrs. Brent Abel
 Ms. Laney Abernethy
 Mr. and Mrs. W. Randall Abney
 Mr. Alan R. Abrams
 Ms. Raydean Acevedo
 Mr. William A. Ackerman
 Camille and Scott Acton
 Mrs. Brock Adams
 Mr. Thomas Adams and
 Ms. Erin Bell
 Ms. Edith Holiday and
 Mr. Terrence Adamson
 Mr. and Mrs. David Aha
 Ms. Sandra J. Ahn
 Mr. and Mrs. Richard Alderson
 Mr. and Mrs. Benjamin B.
 Alexander
- Ms. Betsy Alexander
 Algerian Mission to the United
 Nations
 Dr. Michael Algu
 Mr. and Mrs. Robert Z. Aliber
 Mr. and Mrs. Steven J. Allard
 Mr. and Mrs. David Allen
 Mr. H. Inman Allen
 Mrs. Tricia Allen
 Mr. and Mrs. William G.
 Allen Sr.
 Shirley & David Allen
 Foundation
 Charles and Judy Allton
 Mr. and Mrs. Peter Alpert
 Mr. Edward E. Altemus
 Alterra Bioenergy Resources
 Corporation
 Mr. Haitham Alyousef
 Mr. and Mrs. Edward A. Amb
 American Gas Association
 American International Group
 Ms. Angelique Anderson
 Ms. Cris J. Anderson
 Mr. and Mrs. David R. Anderson
 Mr. and Mrs. Carl R. Anderson
 Mr. Eric J. Anderson
 Mr. and Mrs. Harold Anderson
 Dr. Walter E. Anderson
 Mr. David M. Andreotta
 Dr. and Mrs. Charles A. Andrews
 Mr. Robert E. Anspaugh
 Mr. and Mrs. Basil Anton
 Dr. James W. Antoon
 Archer Daniels Midland
 Foundation
 The Arches Foundation
 Arcos Cielos Corporation
 Mr. and Mrs. Ted G. Arens
 Ms. Shirley A. Armand
 Dean R and Carolyn Armentrout
 Mr. and Mrs. H. Ross Arnold III
 Mr. Douglas N. Arnold and
 Ms. Maria-Carme Calderer
 Ms. Kazuko K. Artus
 The Asceni
 Mr. and Mrs. Charles B. Ashby Jr.
 Ms. Ann Ashton
 Mr. John Ashworth
 Ms. Emily K. Aspinall
 Dr. David A. Atefi
 Ms. Margaret Atkinson
 Mr. Roger Atkinson and
 Ms. Janet Arey
 Mrs. Phoebe Atwood
 Sandra L. and Daniel E. Austin
 Mr. Andrew Auten
 Ms. Regina E. Auth
 Automatic Data Processing
 Mr. Peter Aweida
 Mr. and Mrs. Jerry Babicka
 Mr. Ed Bachrach
 Mr. James F. Backman
 Ms. Beverly A. Bacon

Mr. Will T. Bagby
Helena Rasche Bailer Family
Foundation

Mr. and Mrs. W. Randall Cline
 Howard and Wanda Coburn
 Mr. James Cochran
 Mr. and Mrs. Douglas M. Cochran
 Mr. George Cocks
 Mr. David H. Cofrin and
 Ms. Christine Tryba-Cofrin
 Mr. and Mrs. Darvy M. Cohan
 Mr. Edward B. Cohen and
 Ambassador Charlene Barshesky
 Mr. Michael Cohen and
 Ms. Patricia Collins
 Mr. Scott Alan Cohen
 Dr. Johnnetta B. Cole
 Mrs. Prudence B. Cole
 Ms. Sheryl Cole
 Mr. Lynn R. Coleman
 Ms. Anne M. Colgin and
 Mr. Robert Boston Colgin
 Mr. and Mrs. Owen Colliflower
 Mr. and Mrs. Richard B. Collins
 Michael and Anne Combs
 The Community Foundation of
 the Holland/Zeeland Area
 Community Presbyterian Church
 Ms. Linda Compton
 Mr. Roger C. Conant
 Mr. and Mrs. David Condren
 Mr. Peter D. Conlon
 Mr. Christopher Connolly and
 Ms. Marjorie Liner
 Ms. Maureen J. Connolly
 Dr. Kate Connor
 Mr. John M. Cook
 Mr. Robert A. Cook
 Mr. William Cook and
 Ms. Monika Mevenkamp
 Ms. Margaret A. Cook Levy
 Mr. Charles Kevin Cooper
 Dr. and Mrs. Max Cooper
 Mr. and Mrs. Warren N. Coppedge
 Ms. Ellyn Corey
 Mr. Moises Coria
 Ms. Katie Corish
 Dr. and Mrs. John R. Cornell
 Mr. W. Bryant Cornett
 Mr. and Mrs. Michael F. Coscia
 Mr. and Mrs. John M. Cotton
 Mrs. Courtney A. Couch
 Mr. Raymond Coughlan
 Mr. William G. Coughlin
 Mr. and Mrs. William M. Coulter
 Mr. and Mrs. Rupert Covey
 Mr. John R. Cowher
 Dr. Shawn E. Cowper
 Mr. Christopher W. Cox
 Mr. Gary S. Cox
 Mr. John H. Cox
 Dr. and Mrs. William S. Coxe
 Mr. Erik Crank and
 Mrs. Laura Arbilla
 Ms. Shelley Wike Cranley
 Mr. and Mrs. Gary E. Cripe
 Mr. Thomas H. Critchlow
 Mrs. Pamela Crockett
 Ms. Eleanor B. Crook
 Mrs. Afton E. Crooks
 Mrs. Louis C. Crouch
 Mr. and Mrs. C. R. Crowell
 Mr. and Mrs. William B. Crowley
 Ms. Janice Culpepper
 Cultural Jambalaya
 Culver Family Foundation
 Rebecca C. Cummings and
 Roger Stout
 Mr. Brian Cunnie
 Mr. and Mrs. Chris Cunningham
 Mr. George W. Cunningham
 Hugh and Maddy Cunningham
 Dr. Janet A. Cunningham
 Mr. and Mrs. Carleton E. Curran
 Ms. Catherine Curran
 Mrs. Ben S. Custer
 Mr. Richard Cuthbertson
 Dr. Snezana Z. Cvejin
 Ms. Carmelina F. D'Arro
 Mr. and Mrs. Robert D. Dace-Smith
 Dane Construction
 Ms. Melonee A. Daniels
 Mr. and Mrs. Stephen S. Danielsen
 Mr. Alf Danzie
 Mr. R. G. Darby
 Mr. and Mrs. Richard J. Darger
 Ms. Betsy Darken
 D. A. Daugharty MD
 Mr. and Mrs. Gaston O. Daumy
 Mr. Daniel H. Davenport
 Ms. Meryl M. David
 David and Sylvia Teitelbaum
 Fund
 Mr. and Mrs. David G. Davies
 Ms. Adalyn Davis
 Ms. Barbara M. Davis
 Mr. Christopher L. Davis
 Mr. and Mrs. Don A. Davis Jr.
 Mrs. Edwina L. Davis
 James and Judeth Davis
 Mr. and Mrs. Lynn R. Davis
 Mr. and Mrs. Richard S. Davis
 Mr. and Mrs. Russell F. Davis
 Foster Davis Foundation
 Mr. David Dawson
 Ms. Florence B. Dawson
 Mr. and Mrs. Deane K. Dayton
 Mr. James H. de Graffenreidt Jr.
 Dr. John S. De Groot
 Gary and Linda De Kock
 Mr. Ernestoger
 Mr. and Mrs. RuLloyd

Mr. and Mrs. Michael J. Ellsworth
Mr. and Mrs. Samuel M.
Ellsworth
Ms. Hilary Elmagrabi
Mrs. Julia S. Elsee
Mr. and Mrs. James P. Elster
Dr. Gérard G. Emch and

Mr. Kenneth Harstad
Ms. Carol S. Hart
Ms. Susan Riley Hart
Mr. and Mrs. Steve Hartman
Mr. Benjamin E. Hartsell
Ms. Gwendolyn K. Hartzler
Mr. and Mrs. John Harvey
Mr. and Mrs. Tommy A. Harvey
Mr. and Mrs. William L. Haskins
Mr. Stephen Hatcher
Dr. William P. Hausdorff
Mr. Richard W. Hausler
Mr. and Mrs. Richard Hausmann
Ms. Judith J. Havens
Mr. and Mrs. Robert W. Haviland
Dr. and Mrs. George N. Hay
Mr. Victor L. Haydel
Kathleen Hayes APRN and
Stephen Updegrove MD
Mr. Norman M. Hayes

Mr. and Mrs. Jason E. Koglin
Mr. and Mrs. Robert Kooiman
Mr. and Mrs. Azarig Kooloian
Ms. Eleanor M. W. Kornbau
Kosman Foundation
Mrs. Catherine A. Kosta
Dr. and Mrs. M. Roman Kotlarek
Mr. Edward Kowalski
Mr. Robert C. Kowerski
Mr. Donald Kraft
Mr. Orin S. Kramer
Mr. Steven J. Kramer
Mr. and Mrs. Abraham Krasnoff
Ms. Susan J. Kraus
Dr. Bruce Krawisz and
Dr. Jane Krawisz
Delmar and Sigrid Krehbiel
Mr. Richard H. Kremer
Mr. Steven Kremm and
Ms. Susan Corbett
Mr. and Mrs. Jeffrey Kresge
Mr. and Mrs. Neil Krivanek
Mr. and Mrs. Thomas Krocheski
Ms. Leigh-Anne Krometis
Ms. Carole Kronenberg
Mr. and Mrs. Ehren S. Kruger
Mr. and Mrs. Thomas W.
Krughoff
Mr. and Mrs. Graydon Kuehn
Mr. and Mrs. Alan Kulawik
Stan and Janice Kummer
Mr. Nelson Kunkel
Mr. and Mrs. James R. Kuster
Dr. Frank S. Kusumoto
David M. and Maria Kuziemko
Mr. David W. Kwolek
Ms. Julia I. Kyle
Mr. Nickolas J. Kyser
Mr. Charles G. La Bella
Mr. Trevor LaBarge
Mr. Larry LaBonte
Mr. Joseph R. LaBrie
Ms. Kirsten J. Lackstrom
Rev. and Mrs. Gary R. LaCroix
Dallas and Jo Lacy
Mr. Adam J. Laden and
Ms. Liz Lieberman
Ms. Ethel R. Laidlaw
Mr. John R. Laing and
Ms. Kathleen B. King
Ms. Deborah M. Laird
Mr. and Mrs. Robert G. Lamb
Mr. David C. Lambert
Dr. Matthew J. Lambert III
Mrs. Yvonne Lambert
Ms. Debra Lamfers
Mr. Jeffery Lamkin
Harold and Thelma Jo Landon
Mr. and Mrs. Walter P. Lane
Mr. William A. Lane
Ambassador and
Mrs. James T. Laney
Mr. and Mrs. Roger Lang
Mr. and Mrs. Duane Lansverk

Ms. Mary Larkin
Mr. and Mrs. James M. LaRowe
Ms. Beth Larsen
Mr. Kent W. Larsen
Dr. Roger K. Larson
Mr. and Mrs. Thomas A. Larson
Mr. Mark V. Laseen
Ms. Linda M. Lasley
Mr. and Mrs. Robert F.
Lassandrello
Mr. Thomas A. Last
Mrs. Shirley Lazonby
Mr. and Mrs. Matt Leacock
Mr. and Mrs. Patrick T. Leahy
Mr. and Mrs. Matthew J. LeBlanc
Mr. and Mrs. David Ledrick
Ms. Sylvia S. Lee
Mrs. Vivian L. Lees
Rev. and Mrs. Richard J. Lehman
Mr. Dale W. Leibach and
Ms. Kathleen Patterson
Ms. Donna Leiferman
Mr. Thomas P. Lemke
Mr. and Mrs. Harold Lenhart
Mr. Jay Leno
Mr. Richard A. Lenon
Dr. Susan J. Lenski
Mr. David S. Leonard
Mr. and Mrs. James Leonard
Mr. Corey D. Lesh
Ms. Judith A. Lesniewicz
Mr. and Mrs. Raymond M.
Leuthold
Mr. J. Wade Levering
Levi Strauss & Company
Ms. Pamela Levine
Ms. Beatrice Lewis
Ms. Blanche Lewis
Estate of Blanche V. Lewis
Ms. Charlyn Lewis
Mr. Dale C. Lewis
Mr. Richard D. Lewis
Drs. Raymond and Ruth Liang
Ms. Mary M. Libby
Mr. Wilbert Lick
Mrs. Julie L. Lien
Mr. John R. Ligertwood
Ms. Patricia M. Liles
Mr. Mark Lindborg and
Ms. Laurie Parson
Dr. Stan Lindenfeld
Mr. Walter Lindley
Mr. James Lindsay
Mr. Eugene M. Link and
Ms. Ann Marie Hirsch
Mr. Harry S. Lippy
Dr. Hester J. Lipscomb
Dr. Michael Lloyd
Mr. Joe Logan
Walter H. and Elizabeth B. Logan
Dr. and Mrs. David L. Lohin
Mr. and Mrs. George Lohrer
Dr. and Mrs. William Long

Mr. Harold K. Lonsdale and
Ms. Bryn Hazell
Mr. William C. Looper Jr.
Ms. Sue E. Lorch
Mr. Anthony R. Lorts
Mr. R. P. Loudin
Mr. and Mrs. Patrick Loughlin
Robert M. and Cynthia J. Love
Ms. Stephanie Low
Ms. Suzanne Lowers
Mr. Joseph Ellis Loyd
Mr. and Mrs. Michael J. Luebke
Ms. Barbara A. Luke
Ms. Jill Lundquist
Mrs. Edgar F. Luton
Ms. Joanne Lyman
Mr. and Mrs. Donald R. Lynn
Ms. Marian Lyons
Ms. Laurian E. Lytle
Mr. Bob Mabbs
Ms. Anne Marie Macari
Ms. Megan R. MacMillan
Dr. and Mrs. Robert L. Maddox
Mr. and Mrs. Edwar25(Mrs. 8.75 318 560.0802 THC0 1 Tf8.75n75 0 0 8.end)-25(

Meadlawn Christian Church
Mr. Christopher Meador
Mr. and Mrs. Sam Meers
Ms. Muffie Meier
Mr. Joseph Meiring
Ms. Nancy Meiring
Mr. and Mrs. George Melling
Mr. and Mrs. Wade Melton
Dr. Hugh E. Meredith
Mr. and Mrs. David Merrefield
Mr. and Mrs. Robert Merrill
Mr. and Mrs. Christopher Messina
Mr. W. Peter Metz
Ms. Judith E. Michel
Mr. and Mrs. John Middlebrooks
Dr. David M. Mielke
Mr. and Mrs. Gary B. Miles
Mr. and Mrs. C. David Miller
Mr. and Mrs. Francis J. Miller Jr.
Mr. J. Gary Miller
Ms. Jean Miller
Mr. and Mrs. Larry G. Miller
Dr. Larry R. Miller
Mr. and Mrs. Martin J. Miller
Mr. Robilen Miller and
Ms. Gail R. Hartman

Mr. Dan Buttimer and
Dr. Elizabeth Plunkett-Buttimer
Mr. John Poertner
Ms. Susie Q. Pomares
Mr. Tony Pombo

The Emil J. and Emily D.
Slowinski Fund of The
Saint Paul Foundation

Ms. Ethel Smalls

Ms. Susan Smartt

Mr. and Mrs. Bruce R. Smedley

Ms. Anna M. Smith

Mr. Byrom J. Smith

Mr. and Mrs. Dick Smith

Mrs. Dorothy Grace Smith

Mr. and Mrs. Douglas R. Smith

Dr. Forrest A. Smith and

Mr. Jack P. Philpot

Mr. and Mrs. Gary C. Smith

Mr. James and Mrs. Gary C. SmithMr.

Mr. Ryan C. Walsh
Ms. Theresa G. Walter
Mr. Harry G. Walters and
Ms. Gail Schatz
The San Diego Foundation's
Tom A. and Nell Waltz Fund
Rev. John Wandless
Mr. Donald J. Ward and
Ms. Jennifer L. Eis
Mr. Edward W. Ward
The Honorable Horace T. Ward
Mr. John Ward and
Ms. Mary Ashley Churchwell
Mr. and Mrs. John F. Ward
Mr. and Mrs. Frank W.
Warner III
Mr. and Mrs. Jonathan R. Warner
Ms. Elizabeth C. Warren
Mr. and Mrs. William L. Warren
Ms. Cathryn A. Wasson
Ms. Jean Anne Waterstradt
Mr. and Mrs. Timothy A. Watt
Dr. and Mrs. Nelson B. Watts
Dr. and Mrs. J. Dix Wayman
Ms. Carol L. Weale
Mr. John C. Weaver
Mr. and Mrs. Bruce Weber
Mr. and Mrs. Charles E. Webster
Dr. Edna S. Webster
Mr. Edward Webster
Dr. Susan R. Wehling
Ms. Susen Wehner
Mrs. Robert Weidenhammer
The Patricia and Christopher
Weil Family Foundation
Mr. and Mrs. Stanley C.
Weinberg
Mr. and Mrs. Andrew M. Weir
Mr. and Mrs. James Weiss
Mr. Harvey Weitkamp
Mr. and Mrs. Jefferson W. Welch
Ms. Suzanne H. Welles
Mr. and Mrs. Robert C. Welter
Ms. Wendy K. Werby
Estate of Harold P. Wermuth
Mr. and Mrs. Robert G.
Werner Jr.
Ms. Helen H. West
Mr. and Mrs. James West
Ms. Amanda M. Westerkam
Mr. Paul Weykamp
Ms. Marilee Wheeler
Ms. Mary V. Whelan
Mr. and Mrs. Craig M. Whitcher
Ms. Ann Rhodes White
Mr. and Mrs. Christopher White
Mr. and Mrs. David S. White
Mr. and Mrs. Harry R. White Jr.
Ms. Helen S. White
Mr. Jack White
Ms. Patricia White
Mr. Roger G. White
Mr. and Mrs. James D.
Whitehouse
Ms. Nancy G. Whitney
Ms. Connie Whitson
Mr. and Mrs. Richard
Whittington
Dr. and Mrs. Per H. Wickstrom
Mr. and Mrs. Lawrence Wieland
Mr. and Mrs. Robert Wigton
Mr. W. C. Wilcoxon
Mr. and Mrs. Peter D. Wildes
Ms. Alma Wiley
Mr. and Mrs. Sherwood Wilfert
Ms. Cheryl Wilfong
John and Marcia Wilkinson
Dr. Todd G. Will
Mr. and Mrs. Anthony G.
Williams
Mr. and Mrs. Douglas D. Williams
Mr. Gilbert Judd Williams and
Ms. Anne Power Bonaparte
Mr. and Mrs. James C. Williams
Mrs. Lillie B. Williams
Mr. James W. Williamson
Dr. John S. Willis and
Dr. Judith Horwitz Willis
Ms. Betty H. Wilson
Ms. Cynthia K. Wilson
Mr. Edward B. Wilson
Ms. Linda L. Wilson
Mr. and Weldon C. Wilson
The Jerry J. Wilson Memorial
Foundation
Mr. Matthew L. Winger
Mr. and Mrs. Robert L.
Wintermyer
Ms. Vicki Winters
Miss Rainey Isabel Wise
Mr. and Mrs. Charles Wolf
Mr. Stanley T. Wolfberg

Full Circle Foundation
Mr. J. Rex Fuqua
Mr. and Mrs. James Giattina
Mr. and Mrs. Gareth Glaser
Mr. and Mrs. George Googasian
Mr. and Mrs. Philip Grosz
Vivian Hays Guthrie Charitable Fund
Ms. Joan B. Haan
Mr. and Mrs. Mark A. Hackett
Mr. and Mrs. Donald R. Hall
Mr. and Mrs. John Hall
Mr. Jeffrey J. Hallett and
Mrs. Debra Ann Cameron
Mr. and Mrs. Richard Hamilton
Ms. Patricia Haneline
Mr. and Mrs. Gerald Hanna
Mr. and Mrs. Steven F. Hauser
Mr. and Mrs. Jeffery N. Hayden
Mr. James D. Hearn
Mr. and Mrs. James W. Heavener
Ms. Kimberly Henney
Mr. and Mrs. Barry Herring
Mr. Andy Hirsch and
Ms. Kate Connor
Mr. and Mrs. James W. Hoag
Mr. and Mrs. Jeremy Howard
The C. Tycho and Marie Howle Foundation
Dr. and Mrs. Matthew Hulbert
Mr. and Mrs. Mark Humphrey
Mr. and Mrs. Phil Hurt
Mr. Richard G. Hutcheson III
and Mr. C. Robert Kincaid
Mr. Steven Baughman Jensen and
Dr. Rebecca McGowan Jensen
Mr. and Mrs. Eugene B. Johnson
Mr. George H. Johnson
Mr. Lyle V. Jones
Mr. and Mrs. Donald Julien
The Karma Foundation
Mr. Louis Katsikaris Sr.
Mr. David S. Kellberg
The Key Foundation
Ms. Edi L. King
Mr. James S. King
Ms. Lizabeth King
Mr. and Mrs. Robert Koran
Mr. and Mrs. Timothy E. Kraft
Dr. and Mrs. William M. Layson
Mr. and Mrs. Rodney M. Lee
Dr. Jeffrey D. Leman
Mr. and Mrs. Paul R. Leonard Jr.
Mr. David R. Lewis
LFP Inc.
Ms. Kathy Longinaker
Mr. and Mrs. Anthony Lourey
Dr. Willa Dean Lowery
Mr. and Mrs. Richard F. Lyon
Mr. Joseph MacDonald
Dr. and Mrs. James A. Mack
Ms. Nancy R. Manderson
Mr. Michael J. Mauriel

Mr. Mark McCall and
Ms. Marianna Kulak
Mr. Michael McClain
The Honorable and Mrs. Alonzo
L. McDonald Jr.
Mr. and Mrs. James M. McKinney
Mr. Denis McMorrow
Mr. and Mrs. Mathias Meinzinger
Mr. Peter G. Meyer-Viol
Dr. Masakazu Miyagi and
Dr. Mary Miyagi
Mr. and Mrs. Leslie Moore
Mr. and Mrs. Martin F. Murphy
Mr. Robert E. Naser
Mr. and Mrs. William B. Neely
Ms. Lynn Nesbit
Ms. Lynnette M. Noonan
Mr. and Mrs. Gary Norton
Ms. Deborah R. Olson
Dr. Williams M. Osborne
Ms. Ruth Paddison
Mr. and Mrs. Phil Palisoul
Ms. Gene Palmer
Mr. and Mrs. Daniel Paulien
Mr. and Mrs. William Pease
Mr. and Mrs. Mark A. Phillips
Dr. and Mrs. Lewis W. Pinch
Ms. Cheryl Pond
Dr. and Mrs. Allen A. Posner
Mrs. Rita Coveney Pudenz
Mr. and Mrs. Robert L.
Rearden Jr.
Daniel L. and Sophie K. Reiber
Charitable Trust
Mr. Patrick F. Robertson
Ms. Shelby B. Robertson
Mr. and Mrs. George W. Rohrig
Ms. Harriet Rosenbloom
Mr. and Mrs. Albert H. Rusher
Mr. and Mrs. W. Timothy Ryan
Mr. and Mrs. Paul David
Schaeffer
Mr. and Mrs. John H. Schaff
James H. Shattuck Charitable
Lead Annuity Trust
Mr. and Mrs. Michael Shaw
Mr. William C. Shelton
Mr. Robert E. Shook Jr.
Mr. and Mrs. Gregory R. Simpson
Dr. and Mrs. William H. Simpson
Slifer Family Foundation
Mr. George H. Slingland
Ms. Maureen Spain
Ms. Margaret J. Spencer and
Ms. Patricia J. Lahti
Mr. and Mrs. John R. Stone
Sutter Instrument Company
Ms. Dana Tottenham
Mr. and Mrs. LeRoy S. Troyer
Mr. Gary L. Vandenberg

Ambassadors Circle 2006–2007

- Ms. Margaret B. Gloster
Dr. Jack R. Goetz
Ms. Barbara Grant and
Ms. Maureen MacCarthy
Mr. Douglas Green
Dr. E. Rawson Griffin III and
Ms. D. Clark Griffin-Eddings
Mr. Fred Grob and Ms. Dorothy
Kinney
Dr. and Mrs. James L. Groskreutz
Mr. and Mrs. Edward Grzedzinski
Mr. Robert S. Hage Jr.
Ms. Marcia Halpern
Ms. Patricia G. Harrington
Mr. Robert M. Heath
Mr. and Mrs. James J.
Heckenbach
Mr. and Mrs. Jeffrey A. Heimbuck
Mr. David R. Heinz and
Mrs. Meg O'Kelley-Heinz
Mr. and Mrs. Kim Henry
Mr. Joseph E. Herbst
Mr. Daniel J. Hewitt
Mrs. Juliane Heyman
Mr. Robert M. Hildorf
Dr. and Mrs. David W. Hill
Mr. and Mrs. James L. Hilton
Mr. and Mrs. Philip Holladay
Dr. Donald Hopkins and
Dr. Ernestine Hopkins
Dr. Janet Horenstein
Ms. Andrea Wallace Hoskins
Mr. and Mrs. Paul Hruska
Ms. Heather Hull
Mr. Farley A. Hunter
Mr. John D. Hunter
Ms. Jacqueline Ikeda
Ms. Deborah J. Jackson
Jana Foundation
Mr. Robert L. Jennings and
Ms. Barbara H. Bott
Mr. and Mrs. Alan H. Jobe
Mr. and Mrs. Bruce Johnsen
Ms. Betty W. Johnson
Ms. Linda O. Johnson
Ms. Phyllis Cady Johnson
Mr. and Mrs. Scott K. Johnson
Dr. and Mrs. Thomas D. Johnson
Mr. Charles E. Jones
Ms. Kris L. Kandler and
Ms. Kim Kandler
Mr. Azim Kassam
Mr. John Hodge and
Ms. Stacey Keare
Mr. and Mrs. Derek G. Kirkland
Mr. and Mrs. S. Lee Kling
Mr. Jay Kloosterboer and
Ms. Barbara Zicari
Mr. and Mrs. Jonathan B. Kluger
Mr. and Mrs. Wyck Knox
Mr. and Mrs. Peter Kondor
Mr. John Henry Kreitler and
Ms. Patsy Meyer
Ms. Celia A. Kudro and
Ms. Rhonda J. Parish
Mr. and Mrs. Lawrence N.
Kugelman
Mrs. Julia Ladner
Mr. and Mrs. Peter Lamm
Mr. and Mrs. David L. Lammert
Dr. James T. Langland and
Dr. Penny I. Langland
Mr. and Mrs. James M. LaRowe
Mr. and Mrs. Rejean Laverdiere
Mr. Michael Lebowitz
Mr. David O. Leiwant
Ms. Sue Lewis
Mr. Bruce Lincoln
Ms. Sara D. Lipscomb
Mr. Lawrence P. Littlewood and
Dr. Edna M. Littlewood
Mr. Christopher J. Ludewig
Mr. Dan W. Lufkin
Mr. Christopher M. Mackey and
Ms. Donna L. Cherniak
Mr. Donald Mansfield and
Ms. Rochelle Johnson
Mr. and Mrs. James F.
Marchman III
Mr. David R. Mares and
Ms. Jane Milner Mares
Mr. Colin A. Marshall and
Ms. Maureen A. Ulicny
Mr. and Mrs. Mark A. Massengill
Mr. and Mrs. Paul Maxwell
Mr. Brian K. Mazar and
Mrs. Anne S. Mazar
Mr. James A. McBride and
Ms. Mary Morse
Mr. Edward A. McCallum
Mr. Thomas J. McCarthy
Mr. and Mrs. Ben G. McDow
Dr. Mary Jo McGee-Brown
Mr. and Mrs. Jeffrey J. McHenry
Mr. Wade F. McKenzie
Mr. and Mrs. Hugh J. McLellan
The McMahan Family Fund
Ms. Celeste J. Miller
Mr. and Mrs. James H. Miller
Mr. and Mrs. Richard Miller
Mr. Robert M. Miller
Ms. Laura L. Mitchell
Mr. Wallace D. Mohammed
Ms. Maria A. Montalvo
Mr. and Mrs. Richard L. Moody
Ms. Sheila R. Morris and
Ms. Teresa L. Williams
The Honorable Ambler H.
Moss Jr.
Mr. Richard G. Munden
Ms. Susie Nagel
Dr. and Mrs. Will L. Nash
New World Library
Mr. Kevin W. Nordby
Mr. and Mrs. Lowell Northrop
Mr. and Mrs. Leon Novak
Mr. Joshua Oppenhuis
Mr. William C. Paley
Mr. and Mrs. Christopher D.
Patton
Mr. and Mrs. Corey Pavitt
Mr. and Mrs. William Peabody
Dr. Deborah S. Lee and
Mr. John W. Peifer
Mr. and Mrs. Guy D. Pfeiffer
Ms. Genevieve Purugganan
Mr. and Mrs. David M. Race
Ms. Sita Rao
Mr. and Mrs. William T.
Ratliff III
Red Truck Inc.
Mr. Michael Reich
Dr. and Mrs. Thomas Reppun
Ms. Laura M. Rice
Mr. and Mrs. Richard K. Riess
Mr. and Mrs. Claude D. Roberts
Mr. and Mrs. Thomas S. Roeder
Dr. and Mrs. Edward H. Romond
Mr. Rod Roquemore
Mr. and Mrs. Brian D. Rye
Mr. and Mrs. Eric Sahn
Mr. and Mrs. Fred Saltvold
Mrs. Peter A. Santucci
Dr. and Mrs. Lanny D. Schmidt
Dr. and Mrs. Steven A. Schroeder
Mr. and Mrs. Peter G. Schultz
Mr. and Mrs. William
Schumacher
Ms. Susan Shane
Mildred H. Shashaty Charitable
Lead Annuity Trust
Mr. and Mrs. Mark Shavlik
Mr. Marcus A. Shaw
Sheffield Harrold Charitable
Trust
Mr. William M. Sharp and
Ms. Jane E. Shivers
Ms. Ruth Shults and
Mr. Charles Bradley
Mr. Scott L. Siegal
Mr. and Mrs. George Siegrist
Mr. and Mrs. William Silver
Mrs. Adele Simmons
The Simmons Family Foundation
Mr. and Mrs. Raymond Simon
Mr. A. Boyd Simpson and Ms.
Melody Mann-Simpson
Ms. Catherine Smith
Ms. Kathryn Smith
Dr. and Mrs. R. Bob Smith III
Mr. and Mrs. Ronald C. Souza
Ms. Viola M. Spalding
Spellissy Foundation
Mr. Thomas O. Stanley
Ms. Elizabeth Steele
Mr. and Mrs. Gordon C. Stewart
Mr. and Mrs. David D. Stock
Mr. and Mrs. John Stolzenberg
Mr. and Mrs. Wally Stover
Mr. Andrew F. Strauss
Mr. and Mrs. Gary G. Taylor
Ms. Barbara Teichert
Dr. and Mrs. David U'Prichard
Mr. and Mrs. R. Allen Urban
Mary and Lowell Van DeRiet
Family Fund of the Minneapolis
Foundation
Mr. and Mrs. J. Edward Varallo
Mr. and Mrs. Meeks B. Vaughn Jr.
Mr. and Mrs. Edgar Villchur
Ms. Dawn Vincent
The Honorable Paul A. Volcker
Ms. Lois P. Vrhel
Mr. Jerry F. Walsh
Mr. and Mrs. Robert P.
Warmington
Mr. Chris Wedge and
Ms. Jeanne Markel
Ms. Dorle E. Weil
Mr. and Mrs. Linden H. Welch
Ms. Katherine L. Wells
Ms. Dorothy G. Whitmore
Mr. and Mrs. Paul K. Wichman
Mr. Tim Williams
Ms. Peggy A. Wilson
Mr. Gregory L. Witte
Dr. Richard V. Wolfenden
Mr. and Mrs. Richard Wolszon
Mr. and Mrs. James R. Woodbury
Ms. Marie Elise Young
Mr. and Mrs. Timothy D. Zeak
- Emissary \$1,000 to \$2,499**
Anonymous (51)
Mr. Warren Abbey
Mr. and Mrs. Brent Abel
Mr. and Mrs. W. Randall Abney
Mr. Alan R. Abrams
Ms. Raydean Acevedo
Mr. William A. Ackerman
Mrs. Brock Adams
Mr. Thomas Adams and
Ms. Erin Bell
Mr. and Mrs. David Aha
Ms. Sandra J. Ahn
Mr. and Mrs. Benjamin B.
Alexander
Ms. Betsy Alexander
Dr. Michael Albus
Mr. and Mrs. Robert Z. Aliber
Mr. and Mrs. Steven J. Allard
Mr. and Mrs. David Allen
Mr. H. Inman Allen
Mrs. Tricia Allen
Mr. and Mrs. William G.
Allen Sr.
Shirley & David Allen
Foundation
Mr. and Mrs. Peter Alpert
Alterra Bioenergy Resources
Corporation
Mr. and Mrs. Edward A. Amb
Ms. Angelique Anderson
Ms. Cris J. Anderson
Mr. and Mrs. David R. Anderson
Mr. and Mrs. Carl R. Anderson
Mr. Eric J. Anderson

Mr. and Mrs. William M. Coulter
Mr. and Mrs. Charles Couric
Mr. and Mrs. Rupert Covey
Dr. Shawn E. Cowper
Mr. Christopher W. Cox
Mr. John H. Cox
Dr. and Mrs. William S. Coxe
Mr. Erik Crank and
Mrs. Laura Arbilla
Ms. Shelley Wike Cranley
Mr. and Mrs. Gary E. Cripe
Mr. Thomas H. Critchlow
Mr. Frank Critz
Mrs. Pamela Crockett
Ms. Eleanor B. Crook
Mrs. Afton E. Crooks
Mrs. Louis C. Crouch
Mr. and Mrs. C. R. Crowell
Mr. and Mrs. William B. Crowley
Ms. Janice Culpepper
Cultural Jambalaya
Culver Family Foundation
Mr. Brian Cunnie
Mr. George W. Cunningham
Dr. Janet A. Cunningham
Mr. and Mrs. Carleton E. Curran
Mrs. Ben S. Custer
Mr. and Mrs. Robert D.
Dace-Smith
Mr. Peter Danbury
Dane Construction
Mr. and Mrs. Stephen S.
Danielsen
Mr. Alf Danzie
Mr. R. G. Darby
Ms. Betsy Darken
Mr. and Mrs. Gaston O. Daumy
Mr. Daniel H. Davenport
Ms. Meryl M. David
Mr. and Mrs. David G. Davies
Ms. Adalyn Davis
Mr. Christopher L. Davis
Mr. and Mrs. Don A. Davis Jr.
Mr. and Mrs. Lynn R. Davis
Mr. and Mrs. Richard S. Davis
Mr. and Mrs. Russell F. Davis
Foster Davis Foundation
Ms. Florence B. Dawson
Mr. and Mrs. Deane K. Dayton
Mr. James H. de Graffenreidt Jr.
Dr. John S. De Groot
Mr. Robert de Levie
Dr. Bhaskar Deb
Mr. and Mrs. Charles A.
DeBenedittis
Mrs. Paul A. Deckard
Mr. David Dee
Mr. John Deeter
Mr. and Mrs. Donald DeFord
Mr. and Mrs. Curt G. Degroff
Mr. Paul DeJong
The Honorable Robert J.
Del Tufo

Mr. Guy Dela Rosa
Ms. Jill R. DeLage
Mr. Ricardo Delfin
Lynn and Wayne Delker
Mr. and Mrs. Michael Delman
Ms. Carol A. Denison
Mr. Jeffrey Dennis
Ms. Kate K. Dennis
Mr. and Mrs. Reid W. Dennis
Ms. Sandra L. Detwiler
Ms. Caroline M. Devine
Mr. Charles F. Dewald
Mr. George T. Dewey III
Mr. Gordon Dexter and

Mr. Lawrence D. Gilson
Mr. and Mrs. Thomas A. Giordano
Mr. W. Anderson Glasgow
Ms. Marsha Gleeman
Ms. Susan Gale Gleghorn
Mr. and Mrs. Seth M. Glickenhau
Mr. and Mrs. Edward F. Gliwa Jr.
Mr. and Mrs. Bobby D. Godbee
Mr. John W. Godden
Mr. and Mrs. Nitin Godiwala
Mr. and Mrs. Gene E. Godley
Mr. Kenneth D. Goebel and Ms. Madeline Chinnici
Jackson and Irene Golden 1989 Charitable Trust
Mr. and Mrs. Richard A. Goodrich
Mrs. Pat Gordin
Mr. Robert C. Goree
Mr. and Mrs. Steven T. Gough
Mr. and Mrs. Harry A. Goussetis
Mr. and Mrs. James N. Gracey
Mr. and Mrs. Robert D. Graff
Mr. and Mrs. Charles E. Graves
Ms. Nancy M. Grebe
Mr. and Mrs. Chesley M. Greene
Mr. and Mrs. Ronald Greene
Ms. René Greenhouse
Mr. and Mrs. John A. Greenman
Mr. James Gregg
Mr. and Mrs. Woodfin Gregg
Dr. and Mrs. Martin C. Gregory
Ms. Matilda M. Grey
Mr. Ronald D. Griffin
Ms. Linda J. Griffith and Mr. Scott K. Kellogg
Mr. Charles W. Grigg
Mr. Dennis Grimes
Mr. and Mrs. Joseph F. Grinnell
Edith Grobe Foundation
Mr. and Mrs. Charley Gross
Ms. Jackie Grosse
Ms. Georgia Grummon
Mr. Robert F. Gudmundsen
The Guinness Family Foundation of The Cleveland Foundation
Mr. and Mrs. Ken Gunther
Dr. and Mrs. Surendra Gupta
Mr. and Mrs. Carlton Gutschick
Joanne and Peter Haas Jr. Fund
Mr. Ronald Haas
Mr. Edward E. Haddock Jr. and Ms. Edith K. Murphy-Haddock
Ms. Alexis B. Hafken
Mr. Martin Haig
Mr. and Mrs. Gulam A. Hajat
The Hale Foundation
Ms. Anne Cathcart Hall
Mr. and Mrs. Harvey Hallenberg
Ms. Kathleen M. Halsey
Ms. Etsuko Hamada
Ms. Gaye L. Hamilton

Mr. and Mrs. Herman H. Hamilton
Mr. George R. Hamm
Ms. Joanie M. Hanke
Mr. and Mrs. David G. Hannay
Mr. and Mrs. Sam Harben Jr.
Dr. and Mrs. John B. Hardman
Dot & Lam Hardman Family Foundation
Mr. Charles L. Hardwick
Mr. Steve Harkreader
Ms. Ellen Jean Harman
Mr. Dennis Harms and Ms. Susan Bergman
Mr. Steven P. Harper
Ms. Patricia Harrigan
Mrs. Sara Harris
Ms. Carol S. Hart
Mr. and Mrs. Steve Hartman
Mr. Benjamin E. Hartsell
Mr. and Mrs. William L. Haskins
Mr. Stephen Hatcher
Dr. William P. Hausdorff
Mr. and Mrs. Richard Hausmann
Ms. Judith J. Havens
Mr. and Mrs. Robert W. Haviland
Mr. Norman M. Hayes
Dr. and Mrs. Michael S. Haynes
Ms. Rachel Hays
Mr. John Head and Ms. Claire Broome
Ms. Ellen M. Heath
Ms. Lois Ann Helland
Ms. Laurel Henderson
Ms. Toni D. Hennike
Ms. Jean Herman
Ms. Mary D. Herr
Mr. Stanley N. Hershey
Dr. and Mrs. Francis C. Hertzog Jr.
Dr. and Mrs. Russell P. Herwig
Mr. and Mrs. Ralph A. Hesse Jr.
Mr. and Mrs. Robert G. Hestand
Dr. Kenneth R. Hey
Ms. Virginia Hiatt and Mr. Robert Smith
Ms. Barbara P. Hicks
Dr. and Mrs. Carlton T. Hicks
Ms. Sandra E. Hicks
Mr. Thomas J. Higgins
Mr. B. Harvey Hill Jr.
Ms. Julianne Hill
Mr. and Mrs. Lee H. Hill Jr.
Mr. R. Glenn Hilliard
Mr. and Mrs. Wayne E. Hochstetler
Mr. James Hodges
Ms. Jane E. Holcombe
Mr. Fred H. Hollenberg
Mr. Steven Hollingsworth and Ms. Daidee Springer
Mr. Robert Holmes
Mr. Richard J. Holmstrom and Ms. Kate Ridgway

Mr. and Mrs. J. Daniel Holsenback
Holy Trinity Sharing Fund
Dr. Paul Holzman and Ms. Barbara Crass
Mr. and Mrs. Jeff Horowitz
Mr. Wayne Horvitz
Ms. Cindy R. Hostetler
Mr. Robert W. Howard
Ms. Carolyn S. Huffman
Mr. Procter Hug Jr.
Mr. and Mrs. Robert Hugi
Mr. and Mrs. C. Curtis Hunt
Ms. Mary Hoffman Hunt
Mr. and Mrs. G. David Hurd
Mr. and Mrs. Alan D. Husak
Mr. and Mrs. Terry L. Hutchinson
Mr. and Mrs. Thomas R. Huth
Mr. and Mrs. William M. Hutras
Mr. and Mrs. Robert D. Huxley
Dr. Wallace N. Hyde and Ambassador Jeanette W. Hyde
Mr. and Mrs. Michael H. Iacolucci
Admiral and Mrs. Bobby R. Inman
Mr. George Inverso and Ms. Emma Garkavi
Mr. Domenico Ippolito
Mr. and Mrs. B. William Irlbeck
Ms. Ellin M. Irwin
Mr. and Mrs. John Izard
Mr. Maha Jabr
Mr. and Mrs. Anthony Jacobs
Mr. and Mrs. Paul J. Jacobs
Ms. Diane S. Jacqmin
Mr. and Mrs. Petter S. Jahnsen
Mr. Robert C. Jambou and Mrs. Diana June Blalock
Mr. Ronald Jankowski
Mr. and Mrs. Richard Jasculca
Mr. and Mrs. Michael Jay
Mr. Clay L. Jenkins
Mr. and Mrs. Robert Jennaro
Ms. Marjorie Jennings
Mr. Peter Jessen
Mr. and Mrs. C. Gene Jester
Dr. Christopher Jette
Mr. Corey Johnsen
Mr. Charles Johnson
Mr. and Mrs. Charles A. Johnson
Mrs. Lady Bird Johnson
Mr. Darwin Johnson and Ms. Deborah Bombard
Mr. and Mrs. Irving S. Johnson
Ms. Jennifer A. Johnson
Ms. Jennifer L. Johnson
Mr. Mark W. Johnson
Mr. Paul K. Johnson
Mr. Chris Jones and Mrs. Barb Jones
Mr. and Mrs. Clayton Jones
General and Mrs. David C. Jones
Ms. Deborah Jones

Mr. and Mrs. Frank C. Jones
Mr. Stephen Jones and Ms. Carol Flint
Ms. Miyoung Joo
Bob and Diane Jorgensen
Mr. Shawn P. Jorgensen
Dr. Johanna R. Jorizzo
Mr. Dennis J. Jumper
Mr. Peter Kaczorowski and Ms. Diana M. Van Buren
Ms. Katherine Kademian
Ms. Marsha A. Kademian
Dr. Julian Kadish
Mr. and Mrs. John S. Kahler
Mr. and Mrs. Brian Kaisner
Ms. Ann L. Kalthorn
The Kandell Fund
Mr. and Mrs. Norman M. Kane
Ms. Lisa M. Karanovich
Mr. Michael Karasick and Ms. Stacey Berlow
Dr. M. Rezaul Karim
Mr. Fred Katz and Ms. Linda Kotis Katz
Mr. and Mrs. James Kearns
Mr. Morris T. Keeton
Mr. Stanley E. Kehl and Ms. Karen Fie
Mr. and Mrs. Robert E. Keith Jr.
Dr. Joseph W. Kelaghan
Mr. David J. Keller
Fred P. Keller and W. K. Kellogg Foundation
Mr. Kent A. Kelley and Ms. Mary Louise Beardsley
Mr. Michael W. Kelley
Mr. and Mrs. Myron T. Kelley
Mr. David W. Kelly
Ms. Mary J. Kelly
Mr. and Mrs. Peter G. Kelly
Mr. and Mrs. James E. Kennedy
Ms. Joan M. Kent
Mr. W. Jack Kessler Jr.
Ms. Mary E. Kester
Mr. James A. Kilberg
Mr. and Mrs. Michael G. Kilgore
The Reverend Billy Kim
Mrs. Collier C. Kimball
Mrs. George S. King
Mr. Paul L. King
Mrs. Lyn B. Kirkland
Mr. and Mrs. Donald C. Klawiter
Mr. Jeffrey A. Kleber
Ms. Mary E. Kleinhenz
Mr. Steven Kleinman
Ms. Vicky Kleinman
Ms. Carolyn Klinger
Howard and Geraldine Knaack Foundation
Ms. Ursula Knaeusel
Ms. Marily Knieriemen
Ms. Linda V. Knight
Mr. Robert N. Knight Jr.

Ms. Sandra L. Kobel
Ms. Joan Butler Koehl
Mr. and Mrs. Jason E. Koglin
Mr. and Mrs. Azarig Kooloian
Dr. and Mrs. M. Roman Kotlarek
Mr. Edward Kowalski
Mr. Robert C. Kowerski
Mr. Donald Kraft
Dr. and Mrs. Patrick G. Kraft
Mr. Orin S. Kramer
Mr. Steven J. Kramer
Mr. and Mrs. Abraham Krasnoff
Dr. Bruce Krawisz and
Dr. Jane Krawisz
Mr. Steven Kremm and
Ms. Susan Corbett
Mr. and Mrs. Jeffrey Kresge
Mr. and Mrs. Robert Kretsinger
Mr. and Mrs. Neil Krivanek
Mr. and Mrs. Thomas Krocheski
Ms. Carole Kronenberg
Mr. and Mrs. Ehren S. Kruger
Mr. and Mrs. Thomas W.

Mr. Christopher Mullin
Mr. and Mrs. Christopher G.
Mumford
Mr. Arshad Mumtaz
Dr. and Mrs. Robert S.
Munford III
Mrs. Charlotte T. Murphy
Mr. Dennis J. Murphy
Mr. Patrick J. Murphy
Ms. Christi Murray
Dr. Susan S. Murray
Mr. Richard Myers
Mr. and Mrs. Andrew Nagle
Ms. Kristine Nally
Ms. Carolyn R. Nash
Dr. and Mrs. George W.
Naumburg Jr.

Mr. and Mrs. Christopher C. Schooley
Mr. Steven Schreiber
The John and Kathleen Schreiber Foundation
Mr. and Mrs. Charles D. Schreiner
Mr. David A. Schwartz
Ms. Elizabeth Schwartz
Mr. and Mrs. Craig H. Scott
Ms. Marjorie Y. Scott
Mr. Rodney Scribner
Mr. Anthony M. Sease
Mr. Karl Seib and
Ms. Joan Dacey-Seib
Mr. and Mrs. David Seidner
Ms. Tina E. Sellers
Serge Semenenko Family Foundation
Pastor and Mrs. John Semmes
Mr. Michael F. Sexton
Dr. and Mrs. Robert E. Seymour Jr.
Mr. Charles M. Shaffer Jr.
Mr. Ajay Shah
Mr. and Mrs. Lalit Shahani
Dr. Naveed Shams and
Mrs. Seema N. Shams
Mr. John P. Shapiro
Dr. Lloyd S. Shapley
Mr. and Mrs. Timothy Sharon
Dr. and Mrs. Robert A. Shaw
Mr. Scott G. Shaw
Mr. Stanley K. Sheinbaum
Mr. David J. Shelden
Mr. Peter L. Sheldon
Mr. and Mrs. Rick Sheley
Ms. Sally A. Shelton-Colby
Mr. and Mrs. John Shepard
Ms. Patricia Shepherd
Mr. Harold J. Shinsato
Dr. and Mrs. Sudheer Shirali
Dr. Mark M. Shoemaker and
Dr. Joyce N. Shoemaker
Mr. Thomas Shoup and
Mrs. Katherine Clayborne
Ms. Cynthia Shular
Mr. and Mrs. Martin H. Shuler
Mr. K. T. Shum and
Ms. Joanne Leung
Mr. Gary A. Sick
Mr. Martin Leon Sidwell
The Sikand Foundation
Mr. and Mrs. L. William Silzle
Dr. Elisabeth Simms
Mr. and Mrs. Chris Simonelli
Mr. Gary Simpson
Ms. Ruth K. Sims
Mr. and Mrs. Charles J. Singer
Mr. and Mrs. Amar Singh
Mr. and Mrs. Anil Singh
Dr. and Mrs. Murali Sivarajan
Ms. Dolores Skarke

Ms. Joan Davis Skelton
Ms. Virginia O. Skinner
Mr. Grant H. Slawson and
Ms. Victoria H. McCaffery
Mr. William M. Sloan
The Emil J. and Emily D. Slowinski Fund of The Saint Paul Foundation
Ms. Susan Smartt
Mr. Byrom J. Smith
Mr. and Mrs. Dick Smith
Mr. and Mrs. Douglas R. Smith
Dr. and Mrs. Edward Smith
Dr. Forrest A. Smith and
Mr. Jack P. Philpot
Ms. Joanna Smith
Mr. and Mrs. Joel Smith
Mr. L. Gary Smith
Mr. and Mrs. Lanty L. Smith
Mr. and Mrs. Lawrence P. Smith
Mr. and Mrs. Louis C. Smith
Ms. Marsha N. Smith and
Ms. Laurel A. Bleak
Dr. Marshall S. Smith and
Dr. Nicki C. Smith
Mr. Matthew D. Smith
Mr. and Mrs. P. R. Smith
Mr. and Mrs. Richard C. Smith
Mr. and Mrs. Richard M. Smith
Mr. R. Micheal Smith
Mr. and Mrs. Stephen R. Smith
Mr. William H. Smith
Mr. David S. Smoak and
Ms. Charity A. Townsend
Mr. David J. Snider
Mr. and Mrs. S. Gary Snodgrass
Mr. Michele Sodi
Ms. Marguerite Soffa
Ms. Nancy Soletti
Mr. and Mrs. James Solimano
Mr. and Mrs. Alan W. Solway
Mr. and Mrs. Joachim R. Sommer
Mr. and Mrs. Michael J. Sormani
Mr. and Mrs. Bernard A. Sottili
South Moon Sales
Mr. Brent Sowers
Mr. and Mrs. John P. Spalding
Mrs. Wendell E. Spears
Mr. and Mrs. Carlton E. Speck
Dr. Stuart Speedie and
Dr. Marilyn Speedie
Ms. Eleanor R. Speer
Mr. and Mrs. Jay M. Spieler
Mr. and Mrs. John S. Spinelli
Mr. and Mrs. Joseph Spiner
Mr. and Mrs. Rex J. Spivey
Mr. and Mrs. John D. Spragins
Mr. Kent Spriggs
Mr. Billy L. Spruell and
Ms. Barbara H. Aiken
Ms. Jane P. Srinivasan
Ms. Polly Stanbridge
Mr. and Mrs. Kenneth P. Stapp
Dr. Michael D. Stargel

Dr. and Mrs. Jerry R. Stedinger
Mr. and Mrs. Louis A. Steinberg
Mr. and Mrs. Charles F. Steineger III
Mr. and Mrs. Mark Sten
Mr. Marc O. Stern
Mr. and Mrs. W. Rod Stern
Mr. Roger A. Stevens
Richard W. and Mildred F. Steves Family Foundation
Ms. Marilyn S. Stewart
Ms. Connie W. Stewart
Ms. Jackie Stewart
Mr. Norman Stewart and
Ms. Carolyn A. McDonald
Mr. Steven E. Still
Mr. and Mrs. Robert D. Stillman
Dr. and Mrs. Verner Stillner
Mr. and Mrs. N. Robert Stoll
The Reverend and Mrs. C. Eugene Stollings
Mr. and Mrs. James M. Stone
Ms. Misty M. Stone
Mr. James W. Storm
Mr. William D. Story
Mr. and Mrs. John Strange
Mr. Fred Strebel
Ms. Jennifer Streit
Mr. Joel Alden Streng
Dr. and Mrs. Avery W. Strickland
Ms. Christianna Strohbeck
Ms. Lisa Strongin
Mr. and Mrs. John D. Stuart
Judd & Margaret Sturtevant Fund of the Fidelity Charitable Gift Fund
Mrs. John M. Sullivan
Mr. Steven K. Sullivan and
Ms. Yan Y. Soucie
Mr. and Mrs. Robert Summer
Mr. and Mrs. James E. Summerville Jr.
Ms. Mary P. Sundheimer
Ms. Monica F. Suryapranata
Ms. Elizabeth C. Sussman
Ms. Adah R. Sutton
Dr. Brian P. Sutton and
Ms. Cheryl Santagate-Sutton
Suwon Central Baptist Church of Seoul, Korea
Mr. Paul C. Swanda
Ms. Constance Swank
Mr. Edward L. Sweeney
Ms. Emilia S. Switgall
Ms. Margarete Talarico

Mr. Harry G. Walters and
Ms. Gail Schatz
The San Diego Foundation's
Tom A. and Nell Waltz Fund
Rev. John Wandless
Mr. Donald J. Ward and
Ms. Jennifer L. Eis
Mr. Edward W. Ward
The Honorable Horace T. Ward
Mr. and Mrs. John F. Ward
Mr. and Mrs. Frank W. Warner III
Mr. and Mrs. Jonathan R. Warner
Mr. and Mrs. William L. Warren
Ms. Cathryn A. Wasson
Dr. and Mrs. Nelson B. Watts
Dr. and Mrs. J. Dix Wayman
Mr. John C. Weaver
Mr. and Mrs. Bruce Weber
Mr. and Mrs. Charles E. Webster
Dr. Susan R. Wehling
Ms. Susen Wehner
Mrs. Robert Weidenhammer
The Patricia and Christopher Weil
Family Foundation
Mr. and Mrs. Stanley C. Weinberg
Mr. and Mrs. Andrew M. Weir
Mr. and Mrs. James Weiss
Mr. Harvey Weitkamp
Mr. and Mrs. Jefferson W. Welch
Ms. Suzanne H. Welles
Mr. and Mrs. Robert C. Welter
Ms. Wendy K. Werby
Mr. and Mrs. Robert G. Werner Jr.
Ms. Helen H. West
Mr. and Mrs. James West
Ms. Amanda M. Westerkam
Ms. Marilee Wheeler
Ms. Mary V. Whelan
Mr. and Mrs. Craig M. Whitcher
Mr. and Mrs. Christopher White
Mr. and Mrs. David S. White
Mr. and Mrs. Harry R. White Jr.
Ms. Helen S. White
Ms. Patricia White
Mr. and Mrs. James D. Whitehouse
Dr. and Mrs. Per H. Wickstrom
Mr. and Mrs. Lawrence Wieland
Mr. and Mrs. Robert Wigton
Mr. W. C. Wilcoxon
Mr. and Mrs. Peter D. Wildes
Ms. Alma Wiley
Ms. Cheryl Wilfong
John and Marcia Wilkinson
Dr. Todd G. Will
Mr. and Mrs. Anthony G.
Williams
Mr. and Mrs. Douglas D. Williams

Mr. Gilbert Judd Williams and
Ms. Anne Power Bonaparte
Mr. and Mrs. James C. Williams
Mrs. Lillie B. Williams
Mr. James W. Williamson
Dr. John S. Willis and
Dr. Judith Horwitz Willis
Ms. Betty H. Wilson
Dr. Joseph N. Wilson and Dr.
Selma P. Wilson
Mr. and Weldon C. Wilson
The Jerry J. Wilson Memorial
Foundation
Mr. and Mrs. Robert L.
Wintermyer
Miss Rainey Isabel Wise
Mr. Stanley T. Wolfberg
Dr. Hans G. Wolfhard
The Honorable S. B. Woo
Mr. and Mrs. Hoyt H. Wood
Ms. Jane H. Wood
Ms. Josephine E. Wood
Mr. Mitchell J. Wood
Mr. and Mrs. Peter H. Wood
Dr. Patricia A. Woodall
Ms. Marion Woodfield
Mr. Albert C. Woodroof III
Mr. and Mrs. Paul H. Woodruff
Ms. Doris G. Woods
Mr. Ellis A. Woodward
Mr. and Mrs. J. Allen Woodward
World-Wide Holdings Inc. Fund
Dr. and Mrs. Stinson E. Worley
Mr. Richard F. Wormsbecher
and Ms. Joanna M. Pyper
Mr. James Worth
Dr. L. Marian Wouters
Ms. Rena Wrenn
Mr. Homer Wright
Mr. and Mrs. Robert T. Xeras
Mrs. Barbara Yager
Mr. Aaron Yeargan
Ms. Brigid Yentz
Mr. and Mrs. Michael P. Young
Mr. and Mrs. Stuart Young
Mr. Dave Youngs
Mr. and Mrs. Peter M. Yungbluth
Mrs. Mae Zahl
Mr. and Mrs. Carl V. Zangardi
Mr. and Mrs. Thomas W. Zeiler
Mr. Michael Zentz
Mr. Eric Zerof
Mr. James R. Ziegler
Ms. Patricia Ziegler
Ms. Susan Zimicki
Mr. and Mrs. Brooks Zug
Mr. Richard W. Zurek

The Carter Center
appreciates the support of
many donors. Although
we are able to list only
those gifts that totaled
\$1,000 or more from Sept. 1,
2006, through Aug. 31, 2007,
we are grateful for each gift, in
whatever amount, which helps
to support the vital work of
The Carter Center. Every effort
has been made for accuracy.
Should the Zug4e are de BT/TWardarte

The Legacy Circle

Members of The Legacy Circle provide support through their estate and financial planning.

Anonymous (43)

Ms. Caroline Adams
Dr. and Mrs. Holyoke P. Adams
Ms. Edith Holiday and
Mr. Terrence Adamson
Mr. and Mrs. Shawn M. Aebi
Dr. John F. Ahearne
Ms. Alice H. Allen
Mr. and Mrs. Mark Allen
Ms. Portia Comenetia Allen
Mrs. Philip H. Alston
Ms. Carrie Amestoy
Mr. and Mrs. Charles W.
Anderson
Ms. Deborah J. Anderson and
Ms. Lori B. Lundell
Mr. and Mrs. D. C. Anderson
Ms. Marion Anderson-Peat
Ms. Esther Ando
Mr. and Mrs. Gerald Androne
Ms. Mary R. Angulo
Mr. and Mrs. Colin S. Archibald
Ms. Jane Ariail
Ms. Ethel C. Armstrong
Mr. Carroll Arnold
Mr. and Mrs. Frederick J. Artz
Ms. Kathleen M. Bader
Mr. and Mrs. Marvin L. Bailey
Mrs. Alexandra Bakall
Mrs. Mary Balfour
Mr. Joe T. Bamberg
Mrs. Cecilia T. Banulski
Ms. Nancy E. Barnwell
Ms. Hildegard Bartkowski
Ms. Martha H. Beach
Dr. Christa-Maria Beardsley
Mr. Jay Beck
Mr. Lon A. Beck
Mr. Richard S. Beebe
Mrs. Mae Woods Bell
Mr. Rodney R. Bentz
Ms. Diane Bergen
Mrs. Jean B. Bergmark
Ms. Mary Ellen Bernhardt
Mrs. Margaret W. Bigham
Mr. and Mrs. Lee N. Blatt
Ms. Esther Borg
Dr. Amy R. Boscov and
Dr. Terence Ellen
Mr. and Mrs. William D. Bowers
Mrs. Vernon O. Bowles
Mrs. Laura Boyd
Mr. and Mrs. Albert Boysen
Mr. Raymond W. Brandt
Ms. Edith R. Bray
Ms. Bonnie D. Briscoe
Ms. Angela Brown

Ms. Ella L. Brown
Mr. and Mrs. J. Chris Brown
Ms. Mary L. Brown
Mr. Kenneth E. Bruce
Ms. Barbara Bruner
Ms. Beatrice Buck
Ms. Virginia M. Bukowski
Mr. and Mrs. Richard L. Bulinski
Ms. E. Beatrice Bumgardner
Ms. LuVella C. Burnett
Mr. Ken Burrows
Ms. Elaine Burstatte
Mr. and Mrs. Henry L. Burton
Mr. and Mrs. Bruce C. Byrne
Mr. and Mrs. Michael G. Byrne
Ms. Barbara J. Cain
Mr. James C. Calaway
Mrs. Margaret J. Canavan
Mrs. Virginia Carhartt
and The Reverend Dr. F.
Andrew Carhartt
Dr. and Mrs. Ernest Carlson
Mr. and Mrs. Don E. Carter
Mr. Floyd William Carter
The Honorable Jimmy Carter
and Rosalynn Carter
Mr. and Mrs. Kermon A. Carter
Mr. and Mrs. Alvin Chaiken
Mr. and Mrs. Donald B. Chalker
Ms. Estrella Chan
Dr. Jessalyn L. Charles
Mr. Robert Charm
Mr. and Mrs. Jeffrey Chen
Ms. Nancy J. Christen
Mrs. Carl C. Clark
Mrs. Charles Clark
Ms. Patricia J. Clark
Ms. Ferne Cleven
Dr. Gail L. Clifford
Ms. Nancy B. Cogsdale
Mr. Mark B. Cohen and
Ms. Sheila M. Fyfe
Mrs. Richard A. Coker
Mr. and Mrs. Joseph A. Coleman
Mr. and Mrs. David S. Conant
Ms. Paula M. Cooke
Mr. and Mrs. Ross M. Cooper
Mr. and Mrs. R. Selwyn
Copeland
Mr. and Mrs. Jesse M. Corum III
Mr. John A. Costa
Ms. Suzan L. Costantini
Mr. Paul B. Costello and
Ms. Rita Beamish
Mr. Stuart Couch
Mr. John H. Cox
Mr. and Mrs. John A. Crampton
Mrs. Margaret S. Crawford
Ms. Ruby Crawford
Mr. and Mrs. John J. Cross
Ms. Carol Ann Crotty
Dr. Thomas Crowell
Mr. and Mrs. William B.
Crowley

Mrs. Ann Baker Currie
Ms. Barbara L. Curry
Ms. Alvera S. Cushion
Dr. and Mrs. Paul Cutler
Mr. Chris d'Eon
Mr. and Mrs. Eugene Dahnke
Mr. James F. Dalton
Mr. John Daniels
Mr. and Mrs. Victor Daub Jr.
Mr. and Mrs. George A. Daum
Ms. Adalyn Davis
Mr. Christopher L. Davis
Mr. and Mrs. David M. Davis
Dr. Margaret D. Davis
Mr. and Mrs. Deane K. Dayton
Mrs. Jon A. de Vos
Mrs. Rita Demsey
Mr. Daniel W. Dennison
Mr. Bernard S. Derow
Mrs. Carolyn Derr
Mr. and Mrs. Jack F. Dittman
Mr. and Mrs. William H. Dodge
Mr. Randy K. Dolven
Ms. Alice Donaldson
Mr. Robert Numan and
Dr. Diane E. Dreher
Mr. Horace Drury
Ms. Madalene Eckstein
Dr. K. David G. Edwards
Mr. and Mrs. William T.
Edwards
Mr. Alfred Egendorf
Mr. William D. M. Elfrink
Mr. and Mrs. Jarl R. Engberg
Ms. Gail M. Ervin
Mr. and Mrs. Thomas N. Evans
Mr. Robert V. Evers
Mr. Curtis Farley and
Ms. Barbara Jones
Marjorie A. Farley
Mr. and Mrs. George Fee
Mr. Alfred Fenger
Ms. Taj Ferdowski
Dr. and Mrs. Ricardo A.
Fernandez
Mr. Gary S. Figdore
Mrs. Lucy B. Finch
Ms. Yvette I. Fleming
Mr. and Mrs. John Folsom
Mrs. Jerome Forkosh
Mr. Guy Formichella
Ms. Jacque French
Ms. Nell Funk
Mr. and Mrs. Ladell J. Futch
Mr. and Mrs. Sumner B. Gambee
Mr. W. F. Gasner and
Ms. Lurlene Kyles
Ms. Kathryn A. George
Ms. Margaret H. George
Mrs. E. Alvin Gerhardt
Ms. Jane Gering
Mr. and Mrs. Darwin Gervais
Ms. Elizabeth C. Gibbons
Mr. Harland Gibson

Mr. and Mrs. James L. Gillen
Mr. and Mrs. Martin A. Gilman
Mr. Donald S. Gingrich
Ms. Susan Gale Gleghorn
Mr. Alejandro R.
Gonzales-Garcia
Mrs. Pat Gordin
Mr. and Mrs. Cliff B. Gosney Jr.
Mr. and Mrs. Ken K. Gouw
Ms. Beverly J. Grant
Mr. and Mrs. James B. Grant
Ms. Catherine Green
Ms. Ruth A. Green
Ms. Mary Louise Greene
Ms. Matilda M. Grey
Mrs. Leslie Grimes
Ms. Cynthia F. Grinnell
Ms. Jo Ryals Gummelt
Mr. and Mrs. Donald L. Habig
Ms. Rosemary Hagen
Mrs. John Wayne Hall
Ms. Florence B. Hamlin
Ms. Kay Hamner
Reverend and Mrs. Earl K.
Hanna
Mr. Richard C. Hards
Rev. and Mrs. William K.
Harman
Mr. and Mrs. William R.
Harmon
Ms. Janet Harold
Ms. Patricia G. Harrington
Mr. and Mrs. David H. Harris
Mr. and Mrs. Hubert L. Harris Jr.
Mr. Wayne Harsh
Ms. Carol Hartz
Mr. Leonard W. Hass
Mr. Joseph R. Haun
Heartspring Foundation
Ms. Virginia S. Henderson-Stout
Ms. Carol Henning
Mr. John W. Henry
Ms. Aileen A. Herrmann
Mr. and Mrs. William S. Hewett
Mr. and Mrs. La Vern D. Hiebret
Ms. Mary Ellen Hill
Mr. and Mrs. Bob Hochman
Mr. and Mrs. Wayne E.
Hochstetler
Ms. Joanne Hoemberg
Ms. R. Diane Holliday
Mr. and Mrs. Alan Horne
Mr. Scott A. Horning
Ms. Alpha J. Houston
Dr. and Mrs. Ronald C. Houts
Ms. Rita Hovakimian
Ms. Mattie P. Howze
Ms. Charlotte A. Hubley
Mr. James F. Hughes
Mr. Robert R. Humphrey
Mr. Richard G. Hutcheson III
and Mr. C. Robert Kincaid
Ms. Lois J. Ingle

Mr. Robert A. Ipock Jr. and
Dr. Kim Ipock
Mr. and Mrs. B. William Irlbeck
Mr. and Mrs. John Izard
Ms. M. Christine Jacobs
Mr. Harry C. Jacobson
Ms. Diane S. Jacqmin
Mr. and Mrs. David Janusz
Ms. Bella Jarrett
Marvin D. Jensen
Ms. Barbara Ann Jezl
Dr. and Mrs. J. Timothy Johnson
Mr. James S. Johnson
Ms. Linda O. Johnson
Ms. Phyllis Cady Johnson
Ms. Sheelah R. Johnson
Ms. Susan F. Johnson
Mr. Chris Jones and
Mrs. Barb Jones
Mr. and Mrs. Warren Jones
Mr. and Mrs. John Jopling
Mr. W. Hamilton Jordan
Ms. Marie J. Kane
Mrs. Lee Kapelovitz
Mr. John T. Katsaros
Ms. Eva Madsen Kelly
Ms. Katherine A. Kent
Ms. Judy Kieffer
Mrs. Charlotte Kimelman
The Honorable and
Mrs. Henry L. Kimelman
Mr. C. Robert Kincaid
Mr. and Mrs. David Kirk
Ms. Jo Anne Kirkman
Ms. Ursula Knaeusel

Dr. and John 95.480J.42.0

Mr. and Mrs. Maynard F. Stukey
Dr. and Mrs. James Sun
Mr. and Mrs. James C. Swaner
Reverend and Mrs. M. Thomas
Swantner
Dr. Richard D. Swensen and
The Reverend Grace Swensen
Ms. Katharine Swift
Mr. Edward Tarte
Dr. and Mrs. Alva W. Taylor
Mr. and Mrs. Elyseo Taylor
Ms. Nancy J. Taylor
Ms. Jo Ellen Teasdale
Mr. and Mrs. W. Benson Temple
Ms. Mary Frances Templer and
Mr. Darryl Langdon Templer
Ms. Anne G. B. Thomas
Dr. Gail E. Thomas
Mrs. Jane E. Thomas
Mr. Douglas R. Thompson
Mr. George R. Thornton
Mr. and Mrs. James F. Thorpe
Mr. and Mrs. Jon Tobiessen
Mr. Charles W. Tomlinson

President, Atlanta
Weber Shandwick Worldwide

Managing Partner
Linx Partners

Partner
Alston & Bird

The Hilliard Group

Chairman and CEO
Holder Properties

Chairman
nuBridges

CEO
Signum Group

Chairman
SunTrust Bank

President and CEO
Bank of Atlanta

Chief Executive Officer and
President
Theragenics Corporation

President
T. Stephen Johnson Associates

President and COO
AJC International

Wingspread Enterprises

Director
Jay Kelly Interactive Design

Richard Kerns Truck Parts

Senior Vice President
Plum Creek

Partner
The Koblenz Group

Chief Executive Officer
Wachovia Bank of Georgia

Chairman of the Board
Gay and Erskine Love Foundation

Chief Executive Officer
International Banking
Technologies

Principal
Chappell, Mayfield & Associates

Chairman
Powell Goldstein

Senior Partner
INVESCO

Chairman, President and CEO
Scientific Atlanta, A Cisco
Company

President
PhyTest

President and CEO
IMAGES USA

President
Intrepid Holdings

Vice President, Sales
Perma Therm

President
Ackerman & Company

President
Philips Consumer Electronics

President and CEO
Alimera Sciences

Partner
McKinsey & Company

President and CEO
Internet Security Systems

Vice President
Affiliated Computer Services

Chairman and Chief



August 31, 2007 and 2006

Independent Auditors' Report

The Board of Trustees
The Carter Center, Inc.:

We have audited the accompanying statements of financial position of The Carter Center, Inc. (CCI) as of August 31, 2007 and 2006, and the related statements of activities, functional expenses, and cash flows for the years then ended. These financial statements are the responsibility of CCI's management. Our responsibility is to express an opinion on these financial statements based on our audits.

We conducted our audits in accordance with auditing standards generally accepted in the United States of America. Those standards require that we plan and perform the audit to obtain reasonable assurance about whether the financial statements are free of material misstatement. An audit includes consideration of internal control over financial reporting as a basis for designing audit procedures that are appropriate in the circumstances, but not for the purpose of expressing an opinion on the effectiveness of CCI's internal control over financial reporting. Accordingly, we express no such opinion. An audit also includes testing of evidence supporting the amounts and disclosures in the financial statements, assessing the accounting principles used and significant judgments made by management, as well as evaluating the overall financial statement presentation. We believe that our audits provide a reasonable basis for our opinion.

In our opinion, the financial statements referred to above present fairly, in all material respects, the financial position of The Carter Center, Inc. as of August 2007 and 2006, and the changes in its net assets and its cash flows for the years then ended in conformity with U.S. generally accepted accounting principles.

KPMG LLP

February 15, 2008

Financial Statements

Statements of Financial Position

August 31, 2007 and 2006

	2007	2006
Cash and cash equivalents	\$ 9,661,471	3,169,598
Short-term investments	10,205,285	20,268,700
Accounts receivable:		
Due from Federal government	1,506,727	1,706,777
Other	253,257	318,104
Total accounts receivable	1,759,984	2,024,881
Contributions receivable, net (note 3)	44,004,152	44,229,830
Inventory (note 4)	20,330,166	19,008,828
Investments (note 5)	376,329,441	317,989,786
Property, plant, and equipment, net (note 6)	8,996,870	9,566,928
Artwork	2,113,215	2,087,065
Total assets	<u>\$473,400,584</u>	<u>418,345,616</u>
Liabilities:		
Accounts payable and accrued expenses	\$3,146,496	2,401,852
Grant payable (note 13)	2,000,000	—
Deferred revenue	1,434,424	1,155,084
Annuity obligations (note 7)	2,869,314	2,394,923
Total liabilities	9,450,234	5,951,859
Net assets (note 11):		
Unrestricted	273,603,990	223,201,805
Temporarily restricted	71,044,516	68,397,617
Permanently restricted	119,301,844	120,794,335
Total net assets	463,950,350	412,393,757
Commitments and contingencies (note 13)		
Total liabilities and net assets	<u>\$473,400,584</u>	<u>418,345,616</u>

See accompanying notes to financial statements.

Salaries	\$ 6,841,927	2,705,073	199,563
Consulting	1,921,670	1,188,210	281,381
Communications	1,720,160	290,958	6,631
Services	464,135	107,624	12,415
Office and equipment	3,496,917	392,928	99,859
Vehicles	5,320,708	119,906	31

S

			2007	2006
1,992,923	3,037,310		14,776,796	13,291,065
394,558	390,722		4,176,541	2,884,709
2,896,397	285,316		5,199,462	4,095,989
1,912,522	309,319		2,806,015	2,611,221
100,678	129,042		4,219,424	1,737,090
403	952		5,442,000	2,255,694
1,207,847	65,784		9,030,481	6,914,559
—	—		106,361,168	80,283,935
264,509	760,160		1,577,720	1,518,329
—	—		4,100,554	1,329,178
8,769,837	4,978,605		157,690,161	116,921,769
412,798	976,160		2,086,508	2,037,142
9,182,635	5,954,765		159,776,669	118,958,911

			2006
1,784,502	2,880,482		13,291,065
408,913	260,896		2,884,709
2,658,009	234,844		4,095,989
1,913,687	167,239		2,611,221
73,100	170,878		1,737,090
856	2,025		2,255,694
940,109	675,682		6,914,559
—	—		80,283,935
243,634	795,706		1,518,329
—	—		1,329,178
8,022,810	5,187,752		116,921,769
395,189	934,520		2,037,142
8,417,999	6,122,272		118,958,911

I.

Carter Presidential Library, Inc. (CPL) was organized on October 26, 1981 under the laws of the State of Georgia as a not-for-profit corporation to be operated exclusively for charitable and educational purposes. During 1986, CPL changed its name to Carter Presidential Center, Inc. (CPC). Effective January 1988, CPC changed its name to The Carter Center, Inc. (CCI).

CCI operates programmatically under two main action areas: Peace and Health. In addition, CCI has received broad-based support which is beneficial to all programs and is categorized as Cross-program.

Initiatives in Peace include preventing and resolving conflict, protecting basic human rights, promoting sustainable development, and monitoring elections in emerging democracies. The Health area strives to improve health in the United States and around the world. Initiatives include disease eradication and control and mental health reform. CCI

c. Cash and Cash Equivalents

CCI's cash equivalents represent liquid investments with an original maturity of three months or less.

d. Contributions

Contributions received, including unconditional promises to give, are recognized as revenue when assets or a donor's commitment is received.

Unconditional promises to give that are expected to be collected within one year are recorded at net realizable

3.

Contributions receivable consists of the following at August 31, 2007 and 2006:

	2007	2006
Temporarily restricted:		
Health	\$32,569,489	32,943,619
Peace	626,981	510,296
Cross-program	2,476,120	377,984
Undesignated	2,779,302	3,512,465
Permanently restricted:		
Endowment	5,552,260	6,885,466
	<u>\$44,004,152</u>	<u>44,229,830</u>

The anticipated receipts of these receivables are as follows at August 31, 2007 and 2006:

	2007	2006
Less than one year	\$20,921,439	16,465,540
One to five years	19,857,590	25,116,037
More than five years	8,087,457	8,010,000
Less unamortized discount	(4,862,334)	(5,361,747)
	<u>\$44,004,152</u>	<u>44,229,830</u>

Contributions to be received after one year are discounted at an appropriate discount rate commensurate with the risks involved. Amortization of discounts is recorded as additional contribution revenue in accordance with donor-imposed restrictions on the contributions. Estimated future cash flows to be received after one year were discounted at rates ranging from 2.2% to 6%, based on the U.S. treasury bill rate in effect in the fiscal year in which the pledge was made. In the opinion of CCI's management, all contributions receivable recorded at August 31, 2007 and 2006 are deemed fully collectible.

4.

Inventory at August 31, 2007 and 2006 is comprised of:

	2007	2006
Medication:		
Mectizan	\$ 9,900,897	11,050,576
Zithromax	9,888,952	7,529,887
Medical supplies	540,317	428,365
	<u>\$20,330,166</u>	<u>19,008,828</u>

5.

Short-term investments totaling \$10,205,285 and \$20,268,700 as of August 31, 2007 and 2006, respectively, relate to a claim on cash invested in a pooled cash management account at Emory University. As of August 31, 2007 and 2006, respectively, the cash management accounts were invested in a composite of bonds (48% and 68%), hedge funds (21% and 10%), and U.S. 90-day treasury bills (31% and 22%).

CCI invests its endowment assets in a pooled investment fund managed by Emory University. As of August 31, 2007 and 2006, respectively, the pooled investment fund was invested in a composite of cash equivalents (3% and 2%), bonds (11% and 13%), equity holdings (41% and 42%), marketable alternatives (19% and 19%), private market investments (5% and 12%), marketable real estate (6% and 6%), and natural resources (15% and 6%).

(continues)

Notes

CCI's investments also include assets invested for its charitable gift annuities. These investments are presented in the accompanying statements of financial position at their fair values.

	2007		2006	
Pooled investment fund	\$371,228,265	285,515,394	313,976,415	260,711,388
Cash and cash equivalents	171,537	171,537	169,005	169,005
Fixed income securities	1,995,831	2,010,221	1,436,139	700,689

•

On September 1, 2006, CCI entered into an agreement for a \$1,000,000 revolving line of credit with a financial institution. Such agreement was renewed on August 31, 2007 for an additional 12-month period, expiring on August 31, 2008. Borrowings under the line of credit bear interest at LIBOR plus 0.175%. The agreement is secured by all deposits and investments maintained with the lender, and is guaranteed by Emory University.

•

CCI leases space to various entities under noncancelable leases with various terms. CCI leases to CCEU approximately 20% of CCI's space under a lease for a term of 99 years with a rental payment of \$1 per year. A business agreement with CCI's caterer has no annual rent; rather, CCI receives 5% to 10% of the tenant's gross revenue, as defined in such agreement. Rental income from these leases is included in facilities use income in the accompanying statements of activities.

IO.

The components of donated goods and services for the years ended August 31, 2007 and 2006 are as follows:

	<u>2007</u>	<u>2006</u>
Health:		
Medication	\$84,877,743	56,916,000
Other	459,150	163,670
Peace:		
Computer equipment	—	55,952
Other	—	6,239
Cross-Program:		
Transportation	41,447	—
Operating:		
Transportation	257,428	870,294
	<u>\$85,635,768</u>	<u>58,012,155</u>

Donations of medication were received primarily from two pharmaceutical companies during the years ended August 31, 2007 and 2006.

II.

Unrestricted

As of August 31, 2007 and 2006, unrestricted net assets are as follows:

	<u>2007</u>	<u>2006</u>
Unrealized gain on endowment investments	\$ 85,713,202	53,265,027
Designated by the board of trustees for maintenance of property and equipment	500,000	500,000
Designated by management for:		
Endowment investments	172,030,110	148,568,793
Program funds	5,909,138	8,544,411
Undesignated	9,451,540	12,323,574
	<u>\$273,603,990</u>	<u>223,201,805</u>

(continues)

Unrealized gains on endowment investments are classified as increases in unrestricted net assets. Unrestricted net assets also include funds designated by management as additions for endowment investments and program funding. These amounts are classified as unrestricted net assets due to the lack of explicit donor stipulations that temporarily or permanently restrict their use.

Temporarily Restricted

As of August 31, 2007 and 2006, temporarily restricted net assets are available for the following purposes:

	<u>2007</u>	<u>2006</u>
Health	\$1,100,000	\$1,100,000

The Carter Center Board of Trustees

The Carter Center is governed by its board of trustees, which oversees the Center's assets and property and promotes its objectives and goals.

Chairman
The Carter Center
Investor and Chairman
San Diego Padres

Executive Vice President
National Geographic Society

Owner and CEO
Atlanta Falcons and Georgia
Force Football Teams
Chairman, The Arthur M.
Blank Family Foundation

Chairman
Blum Capital Partners

Co-founder
The Carter Center

Co-founder
The Carter Center

Retired Chairman and CEO
Rock-Tenn Company

Partner
McKenna Long & Aldridge

President Emeritus
Carnegie Corporation of
New York

Journalist

Managing Partner
Executive Vice President

TH



One Copenhill
453 Freedom Parkway
Atlanta, Georgia 30307
(404) 420-5100
Fax (404) 420-5145
www.cartercenter.org