

ir i a

• ScienceDirect

1. Introduction

Chlamydia trachomatis 2.9% 15 2.5% 1.5% 9.5% 2. 2001 2006 11 14 0.1% 3.5% 11 12 13 14 15 16 12 14

2. Materials and methods

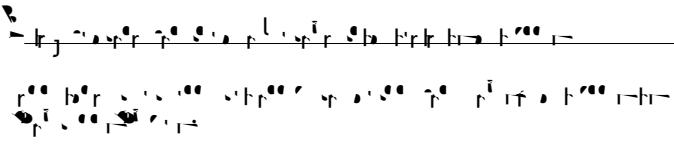
2.1. The study population and sampling

2001 2006 11 14 11 50%

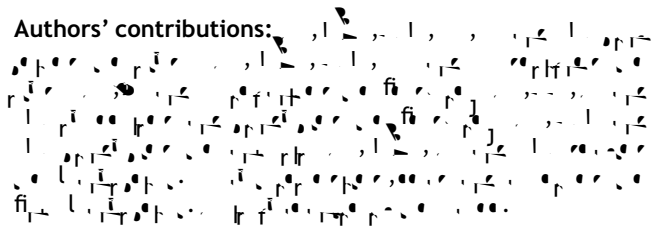
19 10% 9.5% 2.5% 1.5% 9.5% 2. (1) (2) (3) 2000 22 10 10

Table 4. The effect of the different types of the ... on the ... of the ... (n=11155) ...

Variable	Frequency (n=11155)	Percentage (%)	95% CI	P-value
Age (years)	1-4: 4308 5-9: 4490 9-14: 2342	3.8 4.0 2.1	1.0 1.5 3.3	$P_{trend} < 0.001$
Sex	Male: 555 Female: 550	4.9 4.9	1.0 1.5	0.01
Education	1-5: 351 6-10: 4130 10: 150	3.1 37.1 1.3	1.0 1.0 1.3	$P_{trend} < 0.03$
Income	1-5: 9232 6-10: 154 10: 9	82.8 1.4 0.1	1.0 1.4 2.4	$P_{trend} < 0.09$
Marital status	0-10: 208 ≥ 10 : 142 ≥ 50 : 490	1.8 1.2 4.4	1.0 1.5 1.0	$P_{trend} < 0.9$
Smoking status (%)	0-10: 4031 ≥ 10 : 101 ≥ 50 : 5423	36.2 0.9 48.6	1.0 1.2 1.4	$P_{trend} < 0.03$
Alcohol consumption (%)	0: 55 1: 2102 2: 33 ≥ 3 : 112	0.5 18.8 0.3 1.0	1.0 3.0 5.2 1.0	$P_{trend} < 0.001$
Physical activity	1-4: 44 5-9: 440 ≤ 30 : 114 30: 4041	0.4 3.9 1.0 36.2	1.0 1.0 1.0 1.2	0.93
Weight	X_{mean} : 521 10434	4.7 93.6	1.0 1.5	0.535
Height	X_{mean} : 303 02	2.7 1.8	1.0 1.3	0.440
Other variables	1331 925 943	11.9 8.3 8.4	1.0 0.2 0.2	0.153 0.153



Authors' contributions:



2004. <https://doi.org/10.1038/nature02141>
31. [https://doi.org/10.1016/S0140-6736\(00\)02141-5](https://doi.org/10.1016/S0140-6736(00)02141-5)
 32. *Soc Sci Med* 1993; 37:1-5.
 32. *Clin Microbiol Rev* 2004; 17:92-101.
 33. *Lancet* 2008; 362:192-204.
 34. *Lancet* 2008; 362:192-204.